

## ● SERVICE CONDITIONS

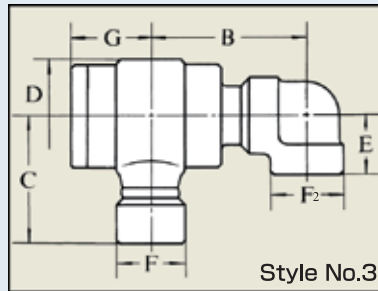
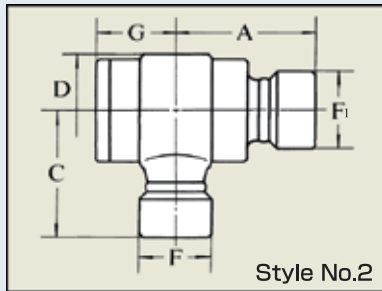
Max. Pressure  
 Size 10A~40A : 34.3MPa (350kgf/cm<sup>2</sup>)  
 Size 50A~80A : 24.5Mpa (250kgf/cm<sup>2</sup>)  
 Max. Temperature : 100°C  
 Material : Weld Steel  
 Seal : NBR  
 Back-up Ring : PTFE  
 Connection : Female Taper Thread(Rc)

## ● FEATURES

1. The well-balanced pressure design stabilizes the thrust load caused by the high-pressure fluid inside and prevents so that excessive load is not added to the bearing. They endure extreme pressures and provide stable operation with little rotary torque fluctuations due to pressure.
2. Large mechanical strength due to an <O-ring> with special backup ring used in the seal section and 2 <radial ball bearings> contained in the bearing section.
3. Maintenance is easy, with simple structure and <O-ring> and <backup ring> being the only consumables.

## ● APPLICATIONS

This joint is suitable for movable piping of various kinds of hydraulic machinery. Use the joint especially to the part of high pressure, frequent movement or to the part where the service life of the joint currently in use is short.



## ● DESCRIPTION OF SRK series:

### Example for placing order

Type→Style No.→Size  
 SRK→2/3→10A/15A/20A/25A/32A  
 40A/50A/65A/80A

Example: SRK-2 25A

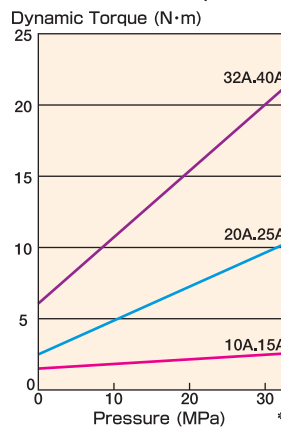
\* FKM seals are available for higher temperatures or chemical products.

\* Flange-type joints (SRK-2F and 3F) can also be manufactured upon request. Please inform the flange specifications.

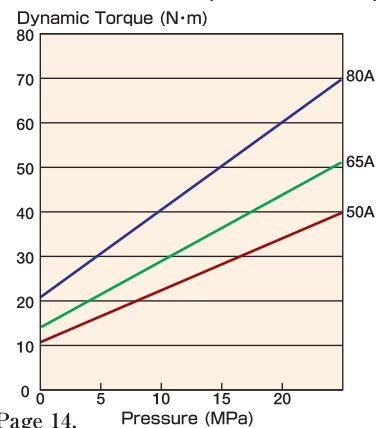
## DIMENSIONS OF SRK series

Nominal Size	A	B	C	D	E	F	F <sub>1</sub>	F <sub>2</sub>	G
10A	3/8B	60	85	40	60	26	33	33	27
15A	1/2B	60	85	40	60	29	33	33	33
20A	3/4B	82	107	55	75	35	53	38	38
25A	1B	82	107	55	75	38	53	47	47
32A	1 1/4B	115	130	105	95	45	57	57	57
40A	1 1/2B	120	130	110	95	51	64	68	64
50A	2B	135	155	130	125	60	77	77	77
65A	2 1/2B	165	180	155	155	67	95	95	96
80A	3B	170	205	170	170	86	114	114	114

## SRK/SSH series DYNAMIC TORQUE GRAPH (Size:10A~40A)



## SRK/SSH series DYNAMIC TORQUE GRAPH (Size:50A~80A)

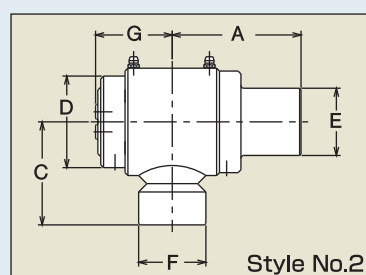


\* Refer to Page 14.

# SSH series (Material: Stainless Steel 10A/15A/20A/25A)

## DIMENSIONS OF SSH series

Nominal Size	A	C	D	E	F	G
10A	3/8B	59	50	50	38	36
15A	1/2B	59	50	50	38	36
20A	3/4B	90	72	75	47	54
25A	1B	90	72	75	47	54



## ● DESCRIPTION OF SSH series:

### Example for placing order

Type→Style No.→Size  
 SSH→2→10A/15A/20A/25A  
 Example: SSH-2 25A

\* Style No. 3 and sizes larger than 32A can also be manufactured upon request.