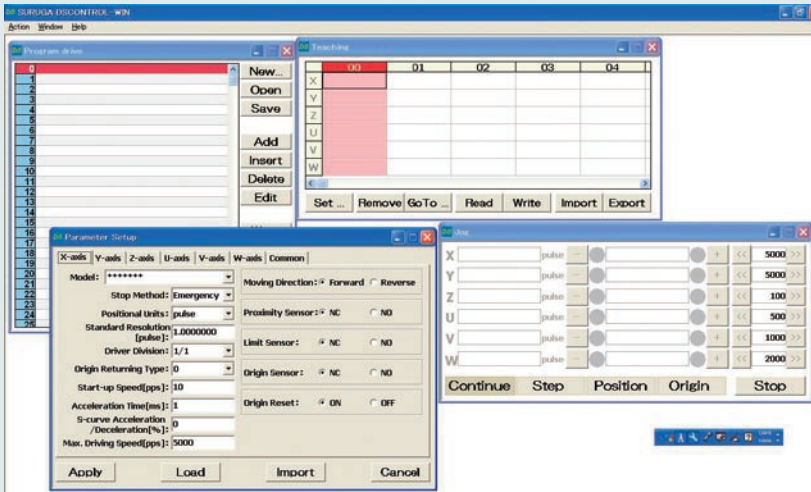


DS102/112 control software : DSCONTROL-WIN

DSCONTROL-WIN is the DS102/112 control software used to easily set and control the DS102/DS112 stepping motor controller connected by USB or RS232C on Microsoft Windows.



※Support in English.

■Main function

- Manual driving (continuous driving, step driving, coordinate movement, zero return)
- Teaching function
- Edit, upload and download of internal programs
- Monitoring and forcible output function of general I/O port

S P E C

Model number	DSCONTROL-WIN
Number of controlled axes	6 axes
Applicable interface	USB/RS232C
Applicable OS	Microsoft(R)Windows 2000/XP

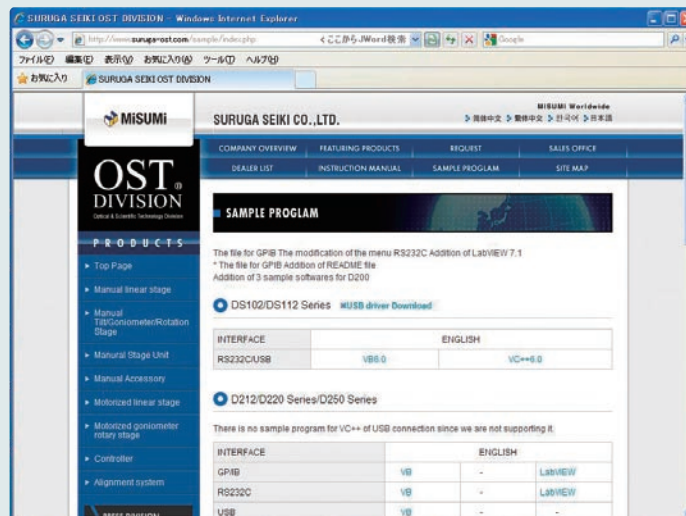
※ This software cannot launch simultaneously.

Stage controller sample program

When you control our stage controllers using a PC, it is necessary to create a program.

It is possible to download free sample programs from our website.

<http://www.suruga-ost.com>



※Sample screen

As the sample programs are a reference example, you do not always have to follow them. The final control program should be created by yourself.

Recommended operation environment

—OS: Windows 98/NT/2000/XP

(VB.NET version and LabVIEW version support only Windows XP Professional Edition)