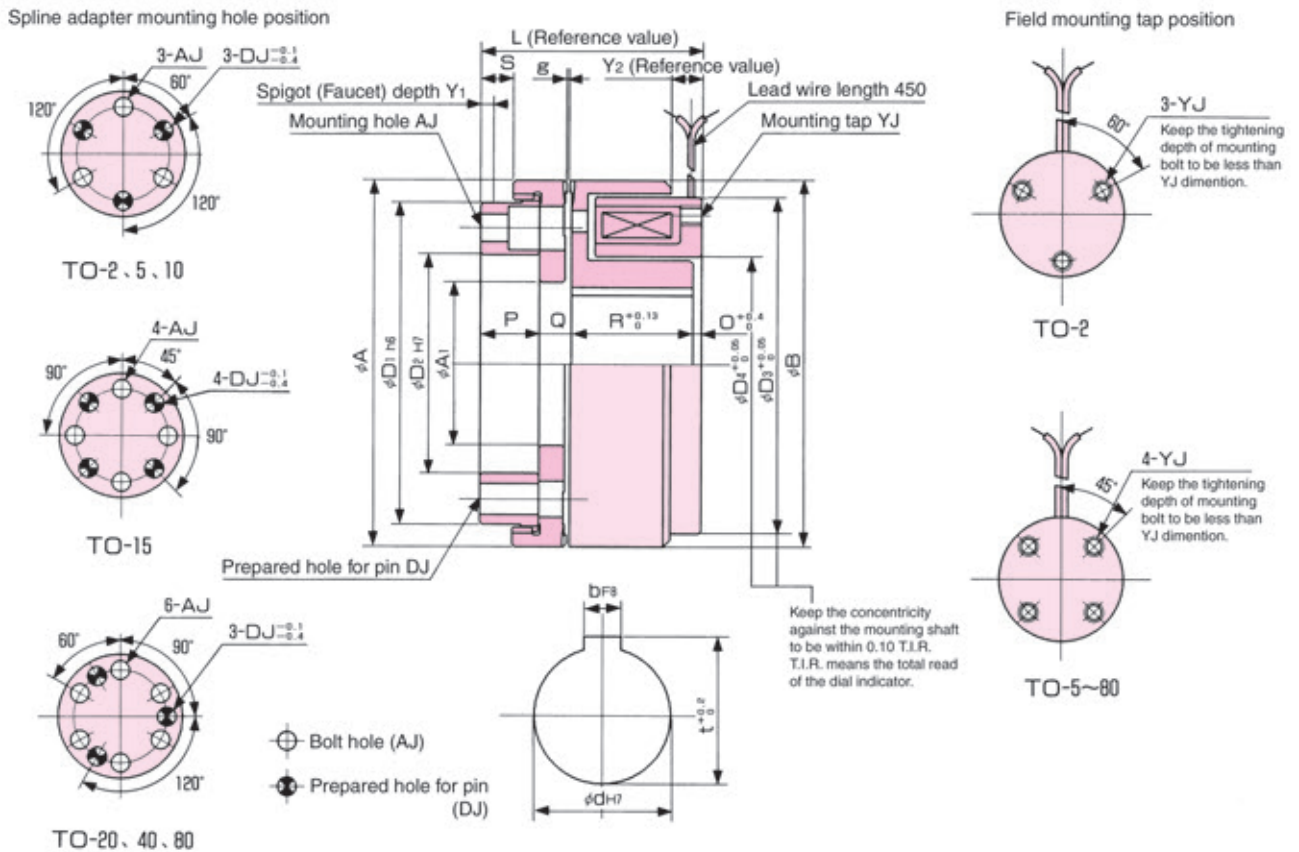


TO-2, 5, 10, 15, 20, 40, 80 Static coil clutch

Model	Rated torque(Nm)	Rated voltage(DC-V)	Power consumption at75°C(W)	Mass(kg)
TO-2	20	24	13	0.60
TO-5	50	24	20	1.0
TO-10	100	24	34	1.8
TO-15	150	24	34	2.7
TO-20	200	24	50	4.2
TO-40	400	24	70	7.2
TO-80	800	24	79	12



Unit: mm

Model	Diameter direction								Shaft direction								Mounting				Shaft hole				
																	AJ		DJ		YJ				
	A	A ₁	B	D ₁	D ₂	D ₃	D ₄	L	O	P	Q	R	S	Y ₁	Y ₂	g	P.C.D	Bolt hole	P.C.D	Prepared hole for pin	P.C.D	Tap	d	b	t
TO-2	50.8	15.9	50.8	44	25	46.56	23.04	40.3	2	8.6	6.1	23.6	4.5	2	4.6	0.2 ^{+0.1} ₀	35	φ3.4hole, φ6.5 ℓ: 4	35	4	38.1	M3×4.5	12	4	13.5
TO-5	76.2	38.1	76.2	64	42	71.37	42.82	49.3	2.5	11.2	7.99	27.61	5.3	3	6.1	0.3 ^{+0.2} ₀	53.75	φ5.5hole, φ9 ℓ: 6.5	53.75	6	63.5	M4×5	24	7	27
TO-10	85.9	40	85.9	73	50	79.32	48.39	55.9	2.5	12.7	7.95	32.75	6.6	3	6.6	0.3 ^{+0.2} ₀	62.48	φ5.5hole, φ9 ℓ: 6.5	62.48	6	71.42	M4×5	28	7	31
TO-15	98.6	45.2	98.6	86	58	91.24	55.52	63.0	2.5	15.7	9.75	35.05	9.4	4	6.6	0.4 ^{+0.3} ₀	72.9	φ6.5hole, φ11 ℓ: 7.5	72.9	8	84.12	M5×6	37	10	40.5
TO-20	117.4	55	117.3	103	70	108.7	66.85	71.4	2.5	19	10.78	39.12	10.4	5	9.9	0.4 ^{+0.3} ₀	86.87	φ8.8hole, φ14 ℓ: 10	86.87	10	95.25	M6×6	44	12	47.5
TO-40	137.7	64.3	137.3	118	84	128.5	79.35	86.9	2.5	22.4	12.85	49.15	13.8	6	9.9	0.4 ^{+0.3} ₀	101.6	φ8.8hole, φ14 ℓ: 10	101.6	10	114.3	M6×8	57	15	62
TO-80	162.6	79.3	162.6	144	104	152.3	99.01	104.1	3.8	28.4	14.19	57.71	16.8	8	10.4	0.5 ^{+0.3} ₀	124.4	φ11hole, φ17.5 ℓ: 13	124.4	13	133.3	M8×9	67	18	73