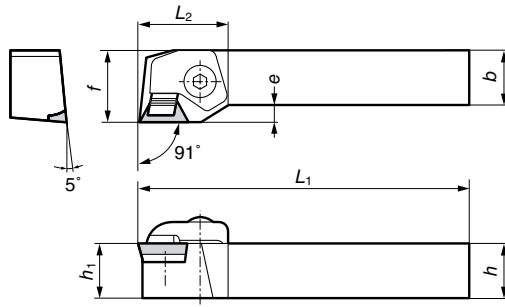
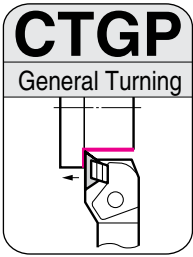
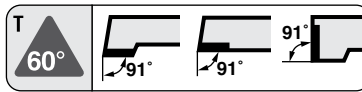


CTGP / CTFP Type

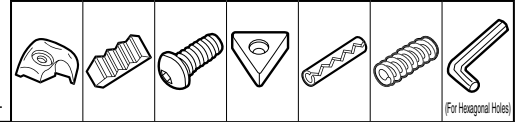


SEC- 40 Type Tool Holders

General Turning

Clamp-on

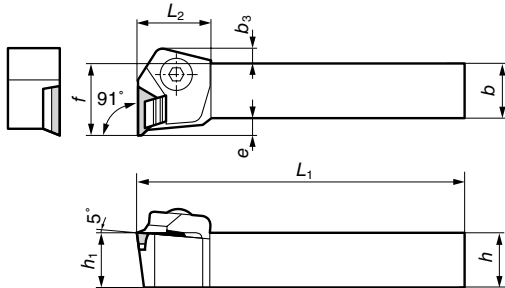
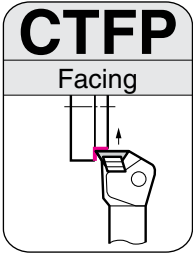
■ Spare Parts



■ Holders

Above figures show right hand tools.

Cat. No.	Conventional Cat. No.	Stock		Dimensions (mm)							Applicable Inserts		Clamp	Chipbreaker	Bolt	Shim	Shim Pin	Spring	Spanner
		R	L	h	b	L ₁	f	h ₁	L ₂	e	Cat. No.	Ref. Page							
CTGP R/L2525-N16	FP21 R/L-44A	●		25	25	160	25	25	34.5	-	TP□□1603	B113	DCR/L2	CBD4R/L	BH0830R/L	STPD322			LH040
CTGP R/L3225-N16	FP21 R/L-45A			32	25	160	25	32	34.5	-			DCR/L2	CBD4R/L	BH0830R/L	STPD322		LH040	
CTGP R/L3232-Q22	FP21 R/L-55			32	32	180	32	32	41.0	-	TP□□2204	B114	DCR/L3	CBD5R/L	BH1036R/L	STPD422	SPP3	DSP5	LH050
CTGP R/L1919-L16	FP22 R/L-33	●		19	19	140	25	19	34.5	6	TP□□1603	B113	DCR/L2	CBD4R/L	BH0824R/L	STPD322		LH040	
CTGP R/L2525-N22	FP22 R/L-44B	●		25	25	160	32	25	41.0	7	TP□□2204	B114	DCR/L3	CBD5R/L	BH1030R/L	STPD422		LH050	

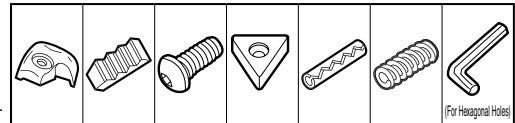


SEC- 40 Type Tool Holders

General Turning

Clamp-on

■ Spare Parts



■ Holders

Above figures show right hand tools.

Cat. No.	Conventional Cat. No.	Stock		Dimensions (mm)								Applicable Inserts		Clamp	Chipbreaker	Bolt	Shim	Shim Pin	Spring	Spanner
		R	L	h	b	L ₁	f	h ₁	L ₂	e	b ₃	Cat. No.	Ref. Page							
CTFP R/L1919-L16	FP25 R/L-33	●		19	19	140	25	19	26	6	8			DCL/R2	CBD4L/R	BH0824L/R	STPD322			LH040
CTFP R/L2525-N16	FP25 R/L-44A	●		25	25	160	32	25	26	7	-	TP□□1603	B113	DCL/R2	CBD4L/R	BH0830L/R	STPD322			LH040
CTFP R/L3225-N16	FP25 R/L-45A			32	25	160	32	32	26	7	-			DCL/R2	CBD4L/R	BH0830L/R	STPD322	SPP3	DSP5	LH040
CTFP R/L2525-N22	FP25 R/L-44B	●		25	25	160	32	25	33	7	7	TP□□2204	B114	DCL/R3	CBD5L/R	BH1030L/R	STPD422			LH040
CTFP R/L3232-Q22	FP25 R/L-55			32	32	180	39	32	33	7	-			DCL/R3	CBD5L/R	BH1036L/R	STPD422			LH040

Note: When using right/left handed type inserts for facing, holder and insert are opposite handed.

External Holders

Positive Inserts

C

D

R

S

T

V

W