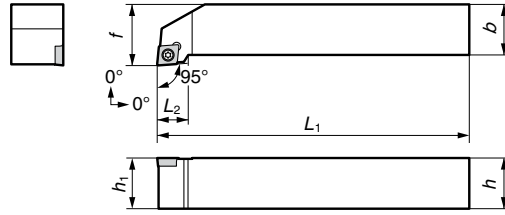
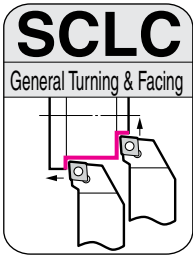




SEC-External Holders SCLC / SDJC / SVJC Type



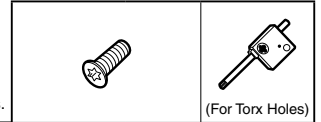
SEC- SC Type Tool Holders

General Turning and Face Grooving

Screw-on



■ Spare Parts

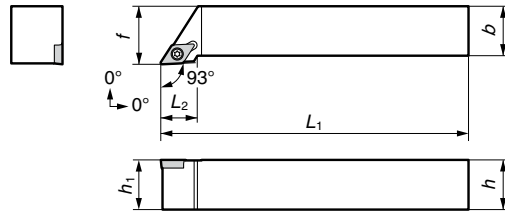
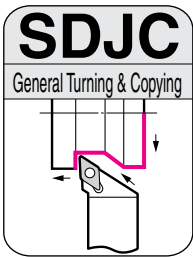


■ Holders

Above figures show right hand tools.

| Cat. No. | Conventional Cat. No. | Stock | | Dimensions (mm) | | | | | | Applicable Inserts | | Screw | Recommended Tightening Torque(N.m) | Spanner |
|------------------------|-----------------------|-------|---|-----------------|----|----------------|----|----------------|----------------|--------------------|-----------|------------|------------------------------------|---------|
| | | R | L | h | b | L ₁ | f | h ₁ | L ₂ | Cat. No. | Ref. Page | | | |
| SCLC R/L0808H06 | SCLC R/L0808-06 | ● | ● | 8 | 8 | 100 | 10 | 8 | - | CC□□0602 | From B72 | BFTX02506N | 1.5 | TRX08 |
| SCLC R/L1010H06 | SCLC R/L1010-06 | ● | ● | 10 | 10 | 100 | 12 | 10 | 15 | CC□□09T3 | From B75 | BFTX0409N | 3.4 | TRX15 |
| SCLC R/L1212H09 | SCLC R/L1212-09 | ● | ● | 12 | 12 | 100 | 16 | 12 | 15 | | | | | |
| SCLC R/L1616H09 | SCLC R/L1616-09 | ● | ● | 16 | 16 | 100 | 20 | 16 | 15 | | | | | |
| SCLC R/L2020K09 | SCLC R/L2020-09 | ● | ● | 20 | 20 | 125 | 24 | 20 | 15 | | | | | |
| SCLC R/L2525M09 | SCLC R/L2525M09 | ● | ● | 25 | 25 | 150 | 30 | 25 | 15 | | | | | |

Note: When using right/left handed type inserts for facing, holder and insert are opposite handed.



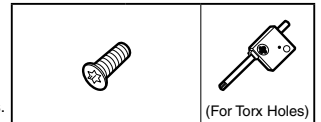
SEC- SD Type Copying Tool Holders

General Turning and Copying

Screw-on



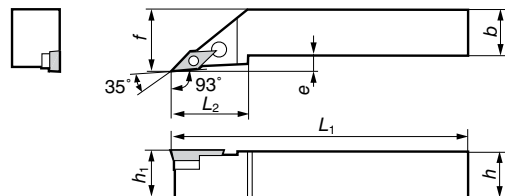
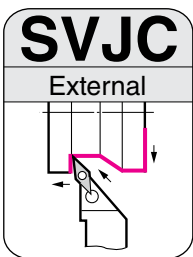
■ Spare Parts



■ Holders

Above figures show right hand tools.

| Cat. No. | Conventional Cat. No. | Stock | | Dimensions (mm) | | | | | | Applicable Inserts | | Screw | Recommended Tightening Torque(N.m) | Spanner |
|------------------------|-----------------------|-------|---|-----------------|----|----------------|----|----------------|----------------|--------------------|-----------|------------|------------------------------------|---------|
| | | R | L | h | b | L ₁ | f | h ₁ | L ₂ | Cat. No. | Ref. Page | | | |
| SDJC R/L0808H07 | SDJC R/L0808-07 | ● | | 8 | 8 | 100 | 10 | 8 | 15 | DC□□0702 | From B82 | BFTX02506N | 1.5 | TRX08 |
| SDJC R/L1010H07 | SDJC R/L1010-07 | ● | ● | 10 | 10 | 100 | 12 | 10 | 18 | | | | | |
| SDJC R/L1212H11 | SDJC R/L1212-11 | ● | ● | 12 | 12 | 100 | 16 | 12 | 18 | DC□□11T3 | From B85 | BFTX0409N | 3.4 | TRX15 |
| SDJC R/L1616H11 | SDJC R/L1616-11 | ● | ● | 16 | 16 | 100 | 20 | 16 | 18 | | | | | |
| SDJC R/L2020K11 | SDJC R/L2020-11 | ● | ● | 20 | 20 | 125 | 24 | 20 | 18 | | | | | |
| SDJC R/L2525M11 | SDJC R/L2525M11 | ● | ● | 25 | 25 | 150 | 29 | 25 | 18 | | | | | |

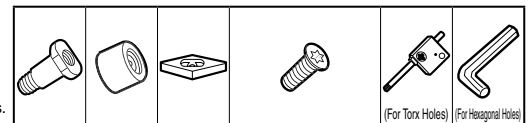


SEC- SV Type Copying Tool Holders

External Copying

Screw-on

■ Spare Parts



■ Holders

Above figures show right hand tools.

| Cat. No. | Conventional Cat. No. | Stock | | Dimensions (mm) | | | | | | Applicable Inserts | | Pin | Nut | Shim | Screw | Recommended Tightening Torque(N.m) | Spanner | Nut Spanner | |
|------------------------|-----------------------|-------|---|-----------------|----|----------------|----|----------------|----------------|--------------------|----------|------|------|--------|-------|------------------------------------|---------|-------------|-----------|
| | | R | L | h | b | L ₁ | f | h ₁ | L ₂ | e | Cat. No. | | | | | | | | Ref. Page |
| SVJC R/L2020K16 | SVJC R/L2020-33 | ● | ● | 20 | 20 | 125 | 25 | 20 | 41 | 5 | VC□□1604 | B118 | VP20 | CPV33N | SVP32 | BFTX03508 | 2.0 | TRX10 | LH025 |
| SVJC R/L2525M16 | SVJC R/L2525-33 | ● | ● | 25 | 25 | 150 | 32 | 25 | 41 | 7 | | | | | | | | | |
| SVJC R/L3225P16 | SVJC R/L3225-33 | ● | ● | 32 | 25 | 170 | 32 | 32 | 41 | 7 | | | | | | | | | |

C External Holders

Positive Inserts

C

D

R

S

T

V

W