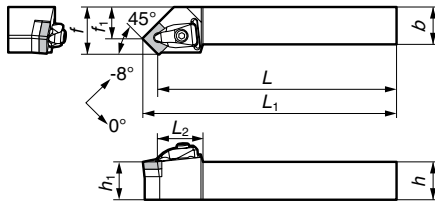
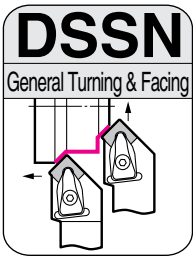
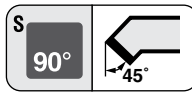


DSSN / PSSN Type



SEC- D Type Tool Holders

General Turning and Copying

Double Clamp

Spare Parts

* Item is sold separately

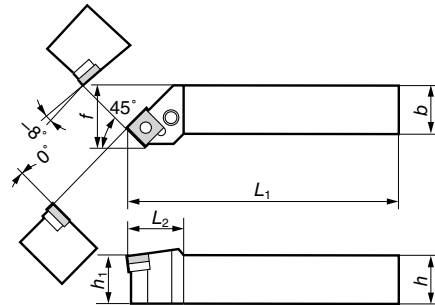
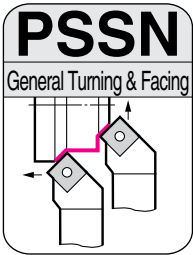
TRX TRD (For Torx Holes)	(For Hexagonal Holes)	(For Hexagonal Holes)			

■ Holders

Above figures show right hand tools.

Cat. No.	Stock		Dimensions (mm)								Applicable Inserts		Clamp Set	Recommended Tightening Torque(N·m)	Shim	Shim Screw	Shim Spanner	Spanner for Upper Surface	Spanner for Lower Surface
	R	L	h	b	L ₁	L	f	f ₁	h ₁	L ₂	Cat. No.	Ref. Page							
DSSN R/L2020K12	●	●	20	20	133.3	125	25	16.9	20	30	SN□□1204	From B41	SCP-2	5.0	SNS1204	BFTX0409N	TRX15 (*)	LH040	LH025
DSSN R/L2525M12	●	●	25	25	158.3	150	32	23.9	25	30									
DSSN R/L2525M15	●	●	25	25	160.2	150	32	22.0	25	30	SN□□1506	From B44	SCP-3	5.0	SNS1506	BFTX0509N	TRX20 (*)	LH040	LH025
DSSN R/L3232P15	●	●	32	32	180.2	170	40	30.0	32	30									
DSSN R/L3232P19	●	●	32	32	182.5	170	40	27.8	32	36	SN□□1906	From B45	SCP-5	5.0	SNS1906	BFTX0511N	TRX20 (*)	LH040	LH025
DSSN R/L4040S19	●	●	40	40	262.5	250	50	37.8	40	36									
DSSN R/L4040S2507	●	●	40	40	266.0	250	50	34.3	40	47	SN□□2507	B47	SCP-6	6.0	SNS2507	BFTX0615N	TRD25 (*)	LH060	—
DSSN R/L4040S2509	●	●	40	40	266.0	250	50	34.3	40	47	SN□□2509	B48							

Clamp Set Parts



SEC- 70 Type Tool Holders

General Turning and Copying

Lever Lock

■ Spare Parts

				(For Hexagonal Holes)

■ Holders

Above figures show right hand tools.

Cat. No.	Conventional Cat. No.	Stock		Dimensions (mm)							Applicable Inserts		Lever Pin	Bolt	Shim	Shim Pin	Spanner
		R	L	h	b	L ₁	f	h ₁	L ₂	Cat. No.	Ref. Page						
PSSN R/L1616H09	PSSN R/L1616-32	●	●	16	16	100	20	16	22	SN□□0903	B40	LCL3	LCS3	LSS32	LSP3	LH025	
PSSN R/L2020K12	PSSN R/L2020-43	●	●	20	20	125	25	20	30								
PSSN R/L2520M12	PSSN R/L2520-43			25	20	150	25	25	30								
PSSN R/L2525M12	PSSN R/L2525-43	●	●	25	25	150	32	25	30	SN□□1204	From B41	LCL4	LCS4	LSS42	LSP4	LH030	
PSSN R/L3225P12	PSSN R/L3225-43			32	25	170	32	32	30								
PSSN R/L3232P12	PSSN R/L3232-43			32	32	170	40	32	30								
PSSN R/L3225P15	PSSN R/L3225-54			32	25	170	32	32	40	SN□□1506	From B44	LCL5	LCS5	LSS53	LSP5	LH030	
PSSN R/L3232P15	PSSN R/L3232-54	●	●	32	32	170	40	32	40								
PSSN R/L3232P19	PSSN R/L3232-64	●	●	32	32	170	40	32	40	SN□□1906	From B45	LCL6	LCS6	LSS63	LSP6	LH040	
PSSN R/L4040R19	PSSN R/L4040-64			40	40	200	50	40	40								

Note: When using right/left handed type inserts for facing, holder and insert are opposite handed.

External Holders

Negative Inserts

C

D

R

S

T

V

W