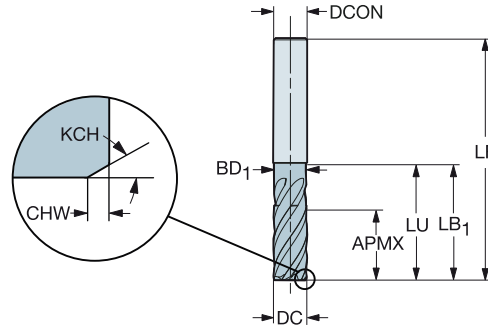
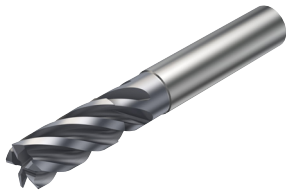


CoroMill® Plura solid carbide square shoulder end mill

Straight, no center cut. Hardness ≤ 30HRC

End mills for heavy duty milling

CNSC 0
 FHA 38°
 BSG COROMANT
 TCDC h10
 TCDCON h6



Metric version

							P	K	Dimensions				
							1730	1730	DCON	LF	BD ₁	LB ₁	
DC	CZC _{MS}	APMX	CHW	KCH	LU	ZEFP	Ordering code						
6.0	6	13.0	0.10	45°	20.0	5	2N342-0600-PC	☆	☆	6.0	57.0	5.7	20.0
8.0	8	18.0	0.15	45°	25.0	5	2N342-0800-PC	☆	☆	8.0	63.0	7.6	25.0
10.0	10	22.0	0.15	45°	30.0	5	2N342-1000-PC	☆	☆	10.0	72.0	9.5	30.0
12.0	12	26.0	0.15	45°	36.0	5	2N342-1200-PC	☆	☆	12.0	83.0	11.4	36.0
14.0	14	30.0	0.15	45°	38.0	5	2N342-1400-PC	☆	☆	14.0	83.0	13.3	38.0
16.0	16	34.0	0.25	45°	42.0	5	2N342-1600-PC	☆	☆	16.0	92.0	15.2	42.0
20.0	20	42.0	0.25	45°	52.0	5	2N342-2000-PC	☆	☆	20.0	104.0	19.0	52.0
25.0	25	52.0	0.25	45°	63.0	5	2N342-2500-PC	☆	☆	25.0	121.0	24.0	63.0

Inch version

							P	K	Dimensions, inch				
							1730	1730	DCON	LF	BD ₁	LB ₁	
DC	CZC _{MS}	APMX	CHW	KCH	LU	ZEFP	Ordering code						
.250	1/4	.626	.004	45°	.937	5	2N342-0635-PC	☆	☆	.250	2.500	.237	.937
.313	5/16	.752	.004	45°	1.063	5	2N342-0794-PC	☆	☆	.313	2.500	.297	1.063
.375	3/8	.878	.006	45°	1.250	5	2N342-0953-PC	☆	☆	.375	3.000	.356	1.250
.438	7/16	1.000	.006	45°	1.438	5	2N342-1111-PC	☆	☆	.438	3.500	.416	1.438
.500	1/2	1.126	.006	45°	1.438	5	2N342-1270-PC	☆	☆	.500	3.500	.475	1.438
.625	5/8	1.315	.010	45°	1.625	5	2N342-1588-PC	☆	☆	.625	3.500	.594	1.625
.750	3/4	1.626	.010	45°	1.937	5	2N342-1905-PC	☆	☆	.750	4.000	.713	1.937

