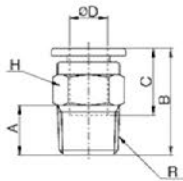
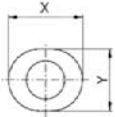


PC-C

Male Straight



MODEL [ØD-T] Tube(Inch)-Thread(NPT)

(mm)

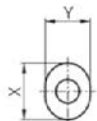
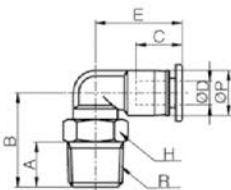
MODEL	ØD	R	C	B	H	A	X	Y	Orifice (Ømm)	W.G(g)	Qty/Inbox
PC 1/8-U10UC	1/8	UNF10 * 32	10.3	11.7	5/16	3.5	7.2	6.2	2	3.1	100
PC 1/8-N00UC	1/8	NPT1/16	10.3	17.3	5/16	7.5	7.2	6.2	3	3.3	100
PC 1/8-N01UC	1/8	NPT1/8	10.3	14.3	13/32	8	7.2	6.2	3	3.2	100
PC 5/32-U10UC	5/32	UNF10 * 32	11.2	16.1	5/16	3.5	10	8	2	2.9	100
PC 5/32-N00UC	5/32	NPT1/16	11.2	18.2	5/16	7.5	10	8	3.5	3.2	100
PC 5/32-N01UC	5/32	NPT1/8	11.2	15.2	13/32	8	10	8	3.5	6	100
PC 1/4-U10UC	1/4	UNF10 * 32	11.7	17.2	13/32	3.5	12	10	2	3.8	100
PC 1/4-N00UC	1/4	NPT1/16	11.7	20.3	13/32	7.5	12	10	4	4.1	100
PC 1/4-N01UC	1/4	NPT1/8	11.7	18.8	13/32	8	12	10	5	6.3	100

MODEL [ØD-T] Tube(Inch)-Thread(NPT)

(mm)

PL-C

Male Elbow



MODEL	ØD	R	ØP	B	E	C	A	H	X	Y	Orifice (Ømm)	W.G(g)	Qty/Inbox
PL 1/8-U10UC	1/8	UNF10 * 32	6.5	14.4	10.55	9	3.5	5/16	7.2	6.2	2	2.7	100
PL 1/8-N00UC	1/8	NPT1/16	6.5	16.5	10.55	9	7.5	11/32	7.2	6.2	2.4	3	100
PL 1/8-N01UC	1/8	NPT1/8	6.5	17	10.55	9	8	13/32	7.2	6.2	2.4	3.3	100
PL 5/32-U10UC	5/32	UNF10 * 32	8	14.4	15.6	11.7	3.5	5/16	10	8	2	3.3	100
PL 5/32-N00UC	5/32	NPT1/16	8	16.5	15.6	11.7	7.5	11/32	10	8	2.4	3.7	100
PL 5/32-N01UC	5/32	NPT1/8	8	17.2	15.6	11.7	8	13/32	10	8	2.8	6.1	100
PL 1/4-U10UC	1/4	UNF10 * 32	10.4	15.4	16.3	12	3.5	5/16	12	10	2	3.9	100
PL 1/4-N00UC	1/4	NPT1/16	10.4	17.95	16.3	12	7.5	11/32	12	10	2.4	4.2	100
PL 1/4-N01UC	1/4	NPT1/8	10.4	17.45	16.3	12	8	13/32	12	10	3	6.8	100