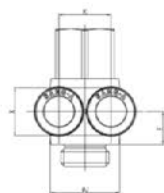
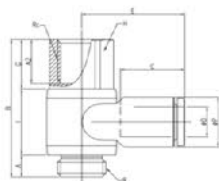


## GPAF-GG

Dual Female Banjo



MODEL [ØD-T] Tube(Metric)-Thread(G)

(mm)

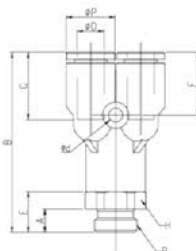
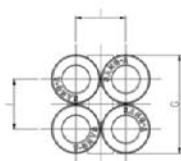
MODEL	ØD	R	Rc	ØP	A1	A2	B	C	E	F	G	H	I	ØJ	K	X	Orifice (Ømm)	W.G(g)	Qty/Inbox
GPAF 04G01-G01	4	G1/8	G1/8	9	5	9	30	14.5	20.6	7.3	10.5	13	14.5	14	9.3	8.6	3.2	19.8	50
GPAF 04G02-G02	4	G1/4	G1/4	9	6	12	37.5	14.5	22.6	9	13.5	16	18	19	9.3	8.6	3.2	33.4	50
GPAF 04G03-G03	4	G3/8	G3/8	9	7	13	43	14.5	24.6	10.5	15	20	21	22.4	9.3	8.6	3.2	52.6	25
GPAF 06G01-G01	6	G1/8	G1/8	11.2	5	9	30	15.5	22	7.3	10.5	13	14.5	14	11.4	11	5	21.4	50
GPAF 06G02-G02	6	G1/4	G1/4	11.2	6	12	37.5	15.5	23.5	9	13.5	16	18	19	11.4	11	5	34.9	50
GPAF 06G03-G03	6	G3/8	G3/8	11.2	7	13	43	15.5	25.7	10.5	15	20	21	22.4	11.4	11	5	54.2	25
GPAF 08G01-G01	8	G1/8	G1/8	13.6	5	9	30	17.8	25.6	8	10.5	13	14.5	14	14.2	13	5.2	24.2	25
GPAF 08G02-G02	8	G1/4	G1/4	13.6	6	12	37.5	17.8	28.1	9	13.5	16	18	19	14.2	13	6.8	37.7	25
GPAF 08G03-G03	8	G3/8	G3/8	13.6	7	13	43	17.8	29.8	10.5	15	20	21	22.4	14.2	13	7	55.8	25
GPAF 08G04-G04	8	G1/2	G1/2	13.6	8.5	16	49.5	17.8	32.1	11	19	24	22	27	14.2	13	7	92.4	20
GPAF 10G02-G02	10	G1/4	G1/4	16.3	6	12	37.5	19.4	27.5	9.7	13.5	16	18	19	17	16	7.3	38.9	15
GPAF 10G03-G03	10	G3/8	G3/8	16.3	7	13	43	19.4	29.6	10.5	15	20	21	22.4	17	16	9	59.8	15
GPAF 10G04-G04	10	G1/2	G1/2	16.3	8.5	16	49.5	19.4	31.5	11	19	24	22	27	17	16	9	95.3	15
GPAF 12G03-G03	12	G3/8	G3/8	19.7	7	13	43	22.4	32.4	11.9	15	20	21	22.4	20	19.5	8.7	68.1	10
GPAF 12G04-G04	12	G1/2	G1/2	19.7	8.5	16	49.5	22.4	34.9	11.9	19	24	22	27	20	19.5	10	103.7	10

MODEL [ØD-T] Tube(Metric)-Thread(G)

(mm)

## GPXT-G

Male Double Y



MODEL	ØD	R	ØP	A	B	C	E	F	G	H	I	Ød	Orifice (Ømm)	W.G(g)	Qty/Inbox
GPXT 04G01	4	G1/8	9	5	38.3	14.5	9.8	13.1	18.2	13	9.2	3.2	2.3	14.3	25
GPXT 04G02	4	G1/4	9	6	39	14.5	10.5	13.1	18.2	16	9.2	3.2	2.3	18.6	25
GPXT 06G01	6	G3/8	11.2	5	41.3	15.5	9.3	14.5	22.6	13	11.5	3.2	3.7	19.5	25
GPXT 06G02	6	G1/2	11.2	6	42.5	15.5	10.5	14.5	22.6	16	11.5	3.2	3.7	23.9	25