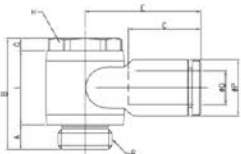
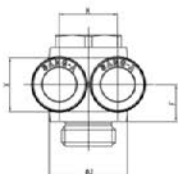


GPA-G

Double Branch A



MODEL [ØD-T] Tube(Metric)-Thread(G)

(mm)

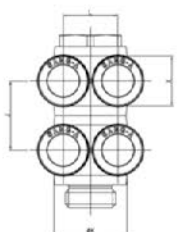
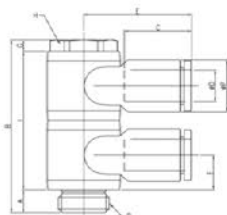
MODEL	ØD	R	ØP	A	B	C	E	F	G	H	I	ØJ	K	X	Orifice (Ømm)	W.G(g)	Qty/Inbox
GPA 04G01	4	G1/8	9	5	22	14.5	20.6	7.3	2.5	13	14.5	14	9.3	8.6	3.2	14.9	50
GPA 04G02	4	G1/4	9	6	27	14.5	22.6	9	3	16	18	19	9.3	8.6	3.2	25.5	50
GPA 04G03	4	G3/8	9	7	32	14.5	24.6	10.5	4	20	21	22.4	9.3	8.6	3.2	42.9	25
GPA 06G01	6	G1/8	11.2	5	22	15.5	22	7.3	2.5	13	14.5	14	11.4	11	5	16.6	50
GPA 06G02	6	G1/4	11.2	6	27	15.5	23.5	9	3	16	18	19	11.4	11	5	27.0	50
GPA 06G03	6	G3/8	11.2	7	32	15.5	25.7	10.5	4	20	21	22.4	11.4	11	5	44.4	25
GPA 08G01	8	G1/8	13.6	5	22	17.8	25.6	8	2.5	13	14.5	14	14.2	13	5.2	19.4	25
GPA 08G02	8	G1/4	13.6	6	27	17.8	28.1	9	3	16	18	19	14.2	13	6.8	29.8	25
GPA 08G03	8	G3/8	13.6	7	32	17.8	29.8	10.5	4	20	21	22.4	14.2	13	7	46.1	25
GPA 08G04	8	G1/2	13.6	8.5	35.5	17.8	32.1	11	5	24	22	27	14.2	13	7	76.4	20
GPA 10G02	10	G1/4	16.3	6	27	19.4	27.5	9.7	3	16	18	19	17	16	7.3	31	20
GPA 10G03	10	G3/8	16.3	7	32	19.4	29.6	10.5	4	20	21	22.4	17	16	9	50	20
GPA 10G04	10	G1/2	16.3	8.5	35.5	19.4	31.5	11	5	24	22	27	17	16	9	79.2	10
GPA 12G03	12	G3/8	19.7	7	32	22.4	32.4	11.9	4	20	21	22.4	20	19.5	8.7	58.2	10
GPA 12G04	12	G1/2	19.7	8.5	35.5	22.4	34.9	11.9	5	24	22	27	20	19.5	10	87.6	10

MODEL [ØD-T] Tube(Metric)-Thread(G)

(mm)

GPA(Ø2)-G

Double Branch A



MODEL	ØD	R	ØP	A	B	C	E	F	G	H	I	J	ØK	L	X	Orifice (Ømm)	W.G(g)	Qty/Inbox
GPA 04G01(2)	4	G1/8	9	5	36.5	14.5	20.6	7.3	2.5	13	29	14.5	14	9.3	8.6	3.2	24.9	25
GPA 04G02(2)	4	G1/4	9	6	45	14.5	22.6	9	3	16	36	18	19	9.3	8.6	3.2	41.4	25
GPA 04G03(2)	4	G3/8	9	7	53	14.5	24.6	10.5	4	20	42	21	22.4	9.3	8.6	3.2	67.0	25
GPA 06G01(2)	6	G1/8	11.2	5	36.5	15.5	22	7.3	2.5	13	29	14.5	14	11.4	11	5	28.2	25
GPA 06G02(2)	6	G1/4	11.2	6	45	15.5	23.5	9	3	16	36	18	19	11.4	11	5	44.4	25
GPA 06G03(2)	6	G3/8	11.2	7	53	15.5	25.7	10.5	4	20	42	21	22.4	11.4	11	5	70.1	25
GPA 08G01(2)	8	G1/8	13.6	5	36.5	17.8	25.6	8	2.5	13	29	14.5	14	14.2	13	5.2	33.8	20
GPA 08G02(2)	8	G1/4	13.6	6	45	17.8	28.1	9	3	16	36	18	19	14.2	13	6.8	50.0	20
GPA 08G03(2)	8	G3/8	13.6	7	53	17.8	29.8	10.5	4	20	42	21	22.4	14.2	13	7	73.5	20
GPA 08G04(2)	8	G1/2	13.6	8.5	57.5	17.8	32.1	11	5	24	44	22	27	14.2	13	7	117.4	20
GPA 10G02(2)	10	G1/4	16.3	6	45	19.4	27.5	9.7	3	16	36	18	19	17	16	7.3	52.3	12
GPA 10G03(2)	10	G3/8	16.3	7	53	19.4	29.6	10.5	4	20	42	21	22.4	17	16	9	81.2	12
GPA 10G04(2)	10	G1/2	16.3	8.5	57.5	19.4	31.5	11	5	24	44	22	27	17	16	9	123.0	12
GPA 12G03(2)	12	G3/8	19.7	7	53	22.4	32.4	11.9	4	20	42	21	22.4	20	19.5	8.7	97.7	6
GPA 12G04(2)	12	G1/2	19.7	8.5	57.5	22.4	34.9	11.9	5	24	44	22	27	20	19.5	10	139.7	6