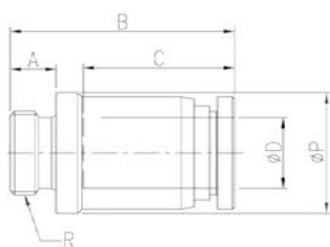


## GPOC-G

Male Run Tee



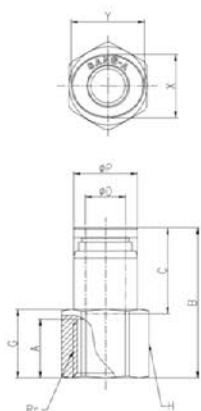
MODEL [ØD-T] Tube(Metric)-Thread(G)

(mm)

MODEL	ØD	R	ØP	A	B	C	H	X	Y	Orifice (Ømm)	W.G(g)	Qty/Inbox
GPOC 04G01	4	G1/8	14	5	18.4	14.5	3	8.6	10.8	3	7.7	100
GPOC 04G02	4	G1/4	17	6	18.1	14.5	3	8.6	10.8	3	12.8	100
GPOC 04G03	4	G3/8	21	7	18.1	14.5	3	8.6	10.8	3	21.2	50
GPOC 06G01	6	G1/8	14	5	23.1	15.5	4	11	13	4	10.2	100
GPOC 06G02	6	G1/4	17	6	19.8	15.5	4	11	13	4	13.0	100
GPOC 06G03	6	G3/8	21	7	18.8	15.5	4	11	13	4	20.6	50
GPOC 08G01	8	G1/8	14	5	26	17.8	5	13	15	5	12.6	100
GPOC 08G02	8	G1/4	17	6	21.7	17.8	6	13	15	6	12.3	100
GPOC 08G03	8	G3/8	21	7	22.7	17.8	6	13	15	6	21.0	50
GPOC 08G04	8	G1/2	25	8.5	23.7	17.8	6	13	15	6	35.0	50
GPOC 10G01	10	G1/8	15.5	5	27.6	19.4	5	16	18.5	5	16.7	50
GPOC 10G02	10	G1/4	17	6	28.3	19.4	6	16	18.5	6	20.4	50
GPOC 10G03	10	G3/8	21	7	24.3	19.4	8	16	18.5	8	21.0	50
GPOC 10G04	10	G1/2	25	8.5	24.8	19.4	8	16	18.5	8	34.0	50
GPOC 12G01	12	G1/8	18.8	5	31.7	22.4	5	19.5	22.5	5	24.8	50
GPOC 12G02	12	G1/4	18.8	6	31.4	22.4	6	19.5	22.5	6	26.4	50
GPOC 12G03	12	G3/8	21	7	32.4	22.4	9	19.5	22.5	8	33.3	50
GPOC 12G04	12	G1/2	25	8.5	28.9	22.4	10	19.5	22.5	8	36.9	25

## GPCF-G

Female Straight



MODEL [ØD-T] Tube(Metric)-Thread(G)

(mm)

MODEL	ØD	Rc	ØP	G	A	B	C	H	X	Y	Orifice (Ømm)	W.G(g)	Qty/Inbox
GPCF 04G01	4	Rc1/8	8.8	11	9	24.4	14.5	13	8.6	10.8	3.2	13.2	100
GPCF 04G02	4	Rc1/4	8.8	14	12	27.4	14.5	16	8.6	10.8	3.2	20.4	100
GPCF 04G03	4	Rc3/8	8.8	15	13	28.4	14.5	19	8.6	10.8	3.2	25.2	50
GPCF 06G01	6	Rc1/8	11	11	9	25.4	15.5	13	11	13	5	14.5	100
GPCF 06G02	6	Rc1/4	11	14	12	28.4	15.5	16	11	13	5	21.7	50
GPCF 06G03	6	Rc3/8	11	15	13	29.4	15.5	19	11	13	5	26.5	50
GPCF 08G01	8	Rc1/8	13	10	9	27.7	17.8	13	13	15	7	16.0	50
GPCF 08G02	8	Rc1/4	13	14	12	30.7	17.8	16	13	15	7	23.2	50
GPCF 08G03	8	Rc3/8	13	15	13	31.7	17.8	19	13	15	7	28.1	50
GPCF 08G04	8	Rc1/2	13	18	16	34.7	17.8	24	13	15	7	48.3	25
GPCF 10G01	10	Rc1/8	15.5	10	9	29.4	19.4	16	16	18.5	7	27.0	50
GPCF 10G02	10	Rc1/4	15.5	13	12	32.4	19.4	16	16	18.5	9	26.1	50
GPCF 10G03	10	Rc3/8	15.5	15	13	33.4	19.4	19	16	18.5	9	31.3	25
GPCF 10G04	10	Rc1/2	15.5	18	16	36.4	19.4	24	16	18.5	9	51.5	25
GPCF 12G02	12	Rc1/8	18.8	12	12	35.4	22.4	19	19.5	22.5	10	44.5	25
GPCF 12G03	12	Rc1/4	18.8	15	13	36.4	22.4	19	19.5	22.5	10	38.3	25
GPCF 12G04	12	Rc3/8	18.8	18	16	39.4	22.4	24	19.5	22.5	10	58.4	25