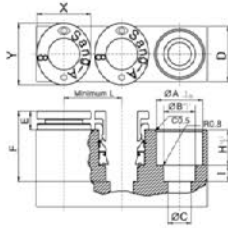


CAS

Insert-Tube



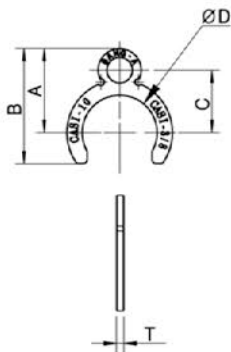
MODEL [ØD-T] Tube(Metric)-Thread(R)

(mm)

MODEL	ØD	ØA	ØB	ØC	D	E	F	H	I	L	X	Y	W.G(g)	Q'ty/ Inbox
CAS-N04	4	8.1	4.2	2.5	11	4.7	16	7.8	3.5	11	10	12	1.8	100
CAS-N06	6	10	6.2	4	13	5	17.2	8.2	4	13	12	14	2.2	100
CAS-N08	8	12	8.2	6	15	4.8	18.2	9.2	4.5	15	14	16	2.9	100
CAS-N10	10	15.1	10.2	8	18	5.8	21	10.2	5	18	17	19	3.5	100
CAS-N12	12	17.7	12.2	10	22	5.2	22.4	12.2	5	22	21	23	4	100

CASI

Insert-Tube Clip



MODEL [ØD-T] Tube(Metric)-Thread(R)

(mm)

MODEL	ØD	A	B	C	T	Q'ty/ Inbox
CASI 04	5.2	9	11.3	6	0.8	100
CASI 06	7.9	10	13.5	7	1	100
CASI 08	9.7	11	15.3	8	1	100
CASI 10	11.9	13.5	18.5	10	1.2	100
CASI 12	14.8	14.3	20.5	11	1.6	100