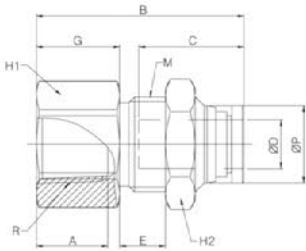


GPMF

Bulkhead Female Straight



Rc



MODEL [ØD-T] Tube(Metric)-Thread(R)

(mm)

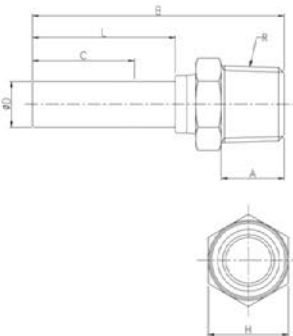
MODEL	ØD	Rc	ØP	M	G	A	B	C	E	H1	H2	Orifice (Ømm)	W.G(g)	Qty/Inbox
GPMF 0401	4	Rc1/8	8.8	M12×1.0P	11	9	25.1	14.5	3.4	14	14	3.2	18.3	100
GPMF 0402	4	Rc1/4	8.8	M12×1.0P	14	12	28.1	14.5	3.4	17	14	3.2	26.0	50
GPMF 0403	4	Rc3/8	8.8	M12×1.0P	15	13	29.1	14.5	3.4	19	14	3.2	27.5	50
GPMF 0601	6	Rc1/8	11	M14×1.0P	9	9	26.3	15.5	6	17	17	5	26.6	50
GPMF 0602	6	Rc1/4	11	M14×1.0P	14	12	31.3	15.5	6	17	17	5	31.4	50
GPMF 0603	6	Rc3/8	11	M14×1.0P	15	13	32.3	15.5	6	19	17	5	32.9	50
GPMF 0801	8	Rc1/8	13	M16×1.0P	8	9	28.9	17.8	7.7	19	19	7	39.9	50
GPMF 0802	8	Rc1/4	13	M16×1.0P	14	12	34.9	17.8	7.7	19	19	7	44.8	50
GPMF 0803	8	Rc3/8	13	M16×1.0P	15	13	35.9	17.8	7.7	19	19	7	41.8	50
GPMF 0804	8	Rc1/2	13	M16×1.0P	18	16	38.9	17.8	7.7	24	19	7	59.7	25
GPMF 1001	10	Rc1/8	15.5	M20×1.0P	10	9	29.3	19.4	5.7	22	24	7	54.8	25
GPMF 1002	10	Rc1/4	15.5	M20×1.0P	13	12	32.3	19.4	5.7	22	24	9	59.7	25
GPMF 1003	10	Rc3/8	15.5	M20×1.0P	15	13	34.3	19.4	5.7	22	24	9	58.3	25
GPMF 1004	10	Rc1/2	15.5	M20×1.0P	18	16	37.3	19.4	5.7	24	24	9	62.1	25
GPMF 1201	12	Rc1/8	18.8	M22×1.0P	9	9	32.4	22.4	8.2	24	26	8	69.4	25
GPMF 1202	12	Rc1/4	18.8	M22×1.0P	12	12	35.4	22.4	8.2	24	26	10	76.4	25
GPMF 1203	12	Rc3/8	18.8	M22×1.0P	14	13	37.4	22.4	8.2	24	26	10	76.1	25
GPMF 1204	12	Rc1/2	18.8	M22×1.0P	18	16	41.4	22.4	8.2	24	26	10	74.1	25

MODEL [ØD-T] Tube(Metric)-Thread(R)

(mm)

GPCJ

Plug-in Male



MODEL	ØD	R	A	B	L	C	H	Orifice (Ømm)	W.G(g)	Qty/Inbox
GPCJ 04M5	4	M5	4	31.2	18	14.5	9	2	3.1	100
GPCJ 0401	4	R1/8	8	34.4	18	14.5	10	2.5	6.1	100
GPCJ 0402	4	R1/4	11	37.4	18	14.5	14	2.5	14.4	100
GPCJ 06M5	6	M5	4	36.2	23	15.5	9	2	3.3	100
GPCJ 0601	6	R1/8	8	39.4	23	15.5	10	4	6.3	100
GPCJ 0602	6	R1/4	11	42.2	23	15.5	14	4	14.6	50
GPCJ 0603	6	R3/8	12	43.4	23	15.5	17	4	23.1	50
GPCJ 0801	8	R1/8	8	41.5	25	17.8	10	6	6.1	50
GPCJ 0802	8	R1/4	11	44	25	17.8	14	6	14.0	50
GPCJ 0803	8	R3/8	12	45	25	17.8	17	6	22.4	50
GPCJ 1002	10	R1/4	11	49.1	27	19.4	17	8	18.8	25
GPCJ 1003	10	R3/8	12	48.6	27	19.4	17	8	20.6	25
GPCJ 1004	10	R1/2	15	51.6	27	19.4	21	8	38.5	25
GPCJ 1202	12	R1/4	11	51.1	29	22.4	17	8	19.7	25
GPCJ 1203	12	R3/8	12	50.6	29	22.4	17	9	21.5	25
GPCJ 1204	12	R1/2	15	53.6	29	22.4	21	9	39.4	25
GPCJ 1403	14	R3/8	12	56.5	30	24.4	20	11	33.1	12
GPCJ 1404	14	R1/2	15	59	30	24.4	21	11	46.1	12
GPCJ 1603	16	R3/8	12	57.5	31	25	20	11	33.7	12
GPCJ 1604	16	R1/2	15	60	31	25	21	13	46.7	12