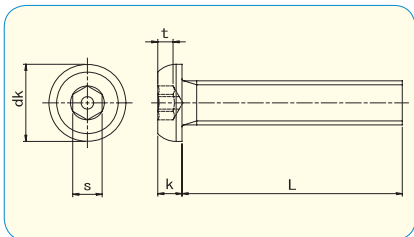


PIN-BUTTON HEX SOCKET SCREWS



● **Material**
Stainless Steel A2



	M3	M4	M5	M6	M8	M10	M12
dk	5.7	7.6	9.5	10.5	14	17.5	21
k	1.65	2.2	2.75	3.3	4.4	5.5	6.6
s	2	2.5	3	4	5	6	8
Drive Size	2	2.5	3	4	5	6	8



SIZE	PART #		Box q'ty
	d	L	
M3	6	HE010306	100
	8	HE010308	100
	10	HE010310	100
	12	HE010312	100
	16	HE010316	100
	20	HE010320	100
	25	HE010325	100
M4	6	HE010406	100
	8	HE010408	100
	10	HE010410	100
	12	HE010412	100
	16	HE010416	100
	20	HE010420	100
	25	HE010425	100
M5	10	HE010510	100
	12	HE010512	100
	16	HE010516	100
	20	HE010520	100
	25	HE010525	100
	30	HE010530	100
	40	HE010540	100
M6	8	HE010608	100
	10	HE010610	100
	12	HE010612	100
	16	HE010616	100
	20	HE010620	100
	25	HE010625	100
	30	HE010630	100
	35	HE010635	100
	40	HE010640	100
	45	HE010645	100
50	HE010650	100	

SIZE	PART #		Box q'ty
	d	L	
M8	10	HE010810	100
	12	HE010812	100
	16	HE010816	100
	20	HE010820	100
	25	HE010825	100
	30	HE010830	100
	35	HE010835	100
	40	HE010840	100
	45	HE010845	100
	50	HE010850	100
M10	20	HE011020	100
	25	HE011025	100
	30	HE011030	100
	40	HE011040	50
	50	HE011050	50
	60	HE011060	50
M12	20	HE011220	10
	25	HE011225	10
	30	HE011230	10
	35	HE011235	10
	40	HE011240	10
	50	HE011250	10
	60	HE011260	10

Please see page 40-41 for tools.