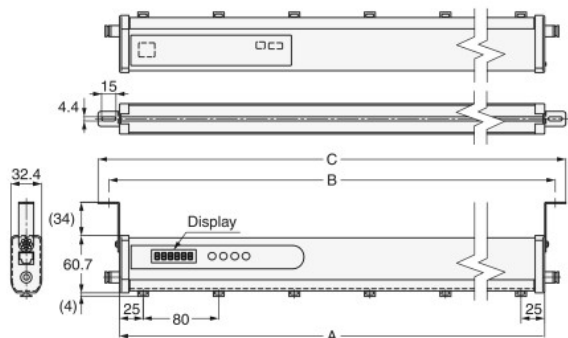


Dimensions

Tolerance class IT16 applies to dimensions in this data sheet unless otherwise specified.

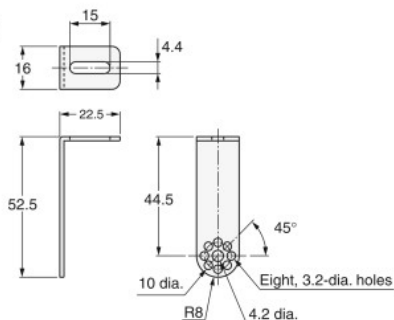
Ionizer

The dimensions and number of Discharge Electrode Modules for each model are shown in the following table.

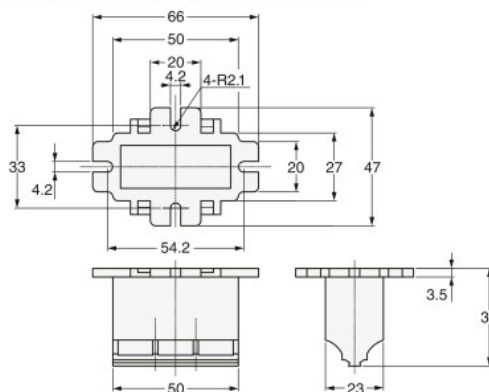


Model	A (mm)	B (mm)	C (mm)	Discharge Electrode Module
ZJ-BAS050	370	394	416	5
ZJ-BAS058	450	474	496	6
ZJ-BAS074	610	634	656	8
ZJ-BAS090	770	794	816	10
ZJ-BAS130	1,170	1,194	1,216	15
ZJ-BAS154	1,410	1,434	1,456	18

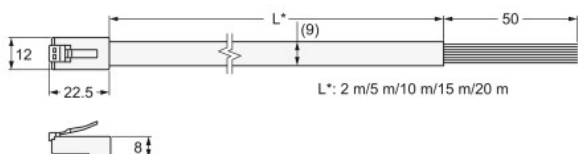
Mounting bracket



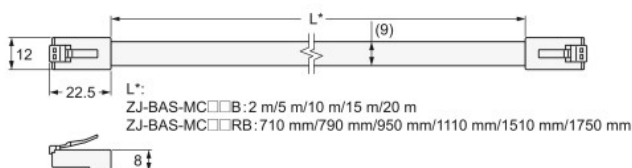
Auxiliary mounting bracket Provided with the ZJ-BAS130/BAS154



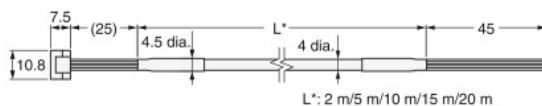
Power Supply Cable ZJ-BAS-MC□□A



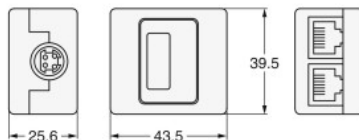
ZJ-BAS-MC□□B/MC□□RB



I/O Cable ZJ-BAS-FC□□A



AC Adapter (Adapter box) ZJ-BAS-PS01



Linking Bracket ZJ9-BAS-L01

