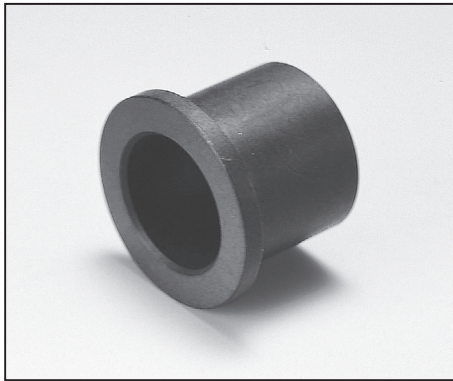


77F

オイルス グライ潼ンフ フランジブッシュ

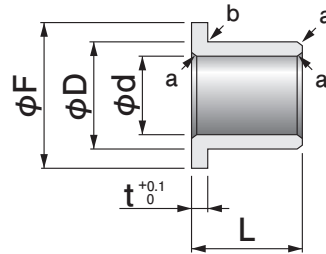
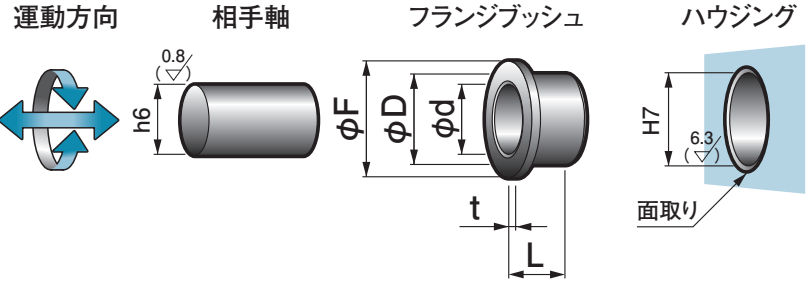


適用する内径、長さから Parts No. を選んでください。

(例)内径9mm、長さ10mmの場合

77F - 0910

Parts No. でご指示ください。



a : 面取り (mm)

φd	~6	~18	~50
a	C0.3	C0.5	C0.8
b	R0.2		

内径 φd	公差	外径 φD	公差	フランジ φF	t	長さ L 公差 ${}^0_{-0.25}$ (★ ${}^0_{-0.2}$)										圧入後 内径 公差 (参考値)	
						5	6	8	10	15	20	25	30	40	50		
3	+0.183 +0.133	6	+0.09 +0.04	9	1.5	*0305											+0.124 +0.074
4	+0.183 +0.133	7	+0.09 +0.04	9	1.5		*0406	0408									+0.126 +0.076
5	+0.183 +0.133	8	+0.09 +0.04	11	1.5		*0506	*0508	0510								+0.126 +0.076
6	+0.186 +0.136	9	+0.09 +0.04	12	1.5		*0606	*0608	0610								+0.129 +0.079
7	+0.198 +0.148	11	+0.10 +0.05	15	2.0				0710								+0.132 +0.082
8	+0.202 +0.152	12	+0.10 +0.05	16	2.0		*0806	0808	0810	0815							+0.136 +0.086
9	+0.205 +0.155	13	+0.10 +0.05	17	2.0				0910								+0.139 +0.089
10	+0.215 +0.165	14	+0.10 +0.05	18	2.0			1008	*1010	1015							+0.149 +0.099
12	+0.218 +0.168	16	+0.10 +0.05	20	2.0				*1210	1215	1220						+0.152 +0.102
15	+0.240 +0.170	21	+0.10 +0.05	27	3.0				1510	1515	1520						+0.176 +0.106
16	+0.240 +0.170	22	+0.10 +0.05	28	3.0				1610	1615	1620	1625					+0.176 +0.106
17	+0.250 +0.180	23	+0.10 +0.05	29	3.0						1720						+0.186 +0.116
18	+0.250 +0.180	24	+0.10 +0.05	30	3.0					1815	1820						+0.186 +0.116
20	+0.310 +0.190	26	+0.11 +0.06	32	3.0					2015	2020	2025					+0.236 +0.116
25	+0.310 +0.190	31	+0.11 +0.06	37	3.0							2520	2525	2530			+0.238 +0.118
30	+0.310 +0.190	36	+0.11 +0.06	42	3.0							3020		3030			+0.238 +0.118
40	+0.340 +0.200	48	+0.11 +0.06	56	4.0									4030	4040		+0.268 +0.128
50	+0.350 +0.210	60	+0.11 +0.06	70	5.0										5040	5050	+0.280 +0.140

※寸法公差は+25°Cでの測定値です。