

DRB230

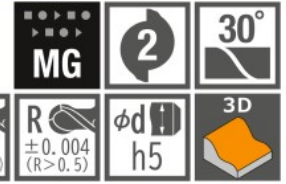
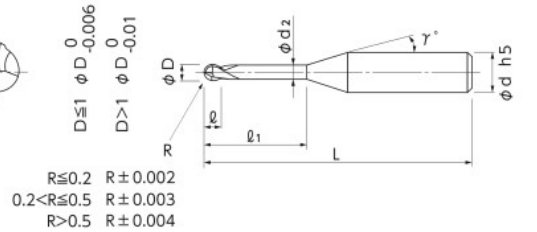
Size R0.05 ~ R3

DLC

Long Neck Ball End Mill for Copper Electrode

Total 94 sizes

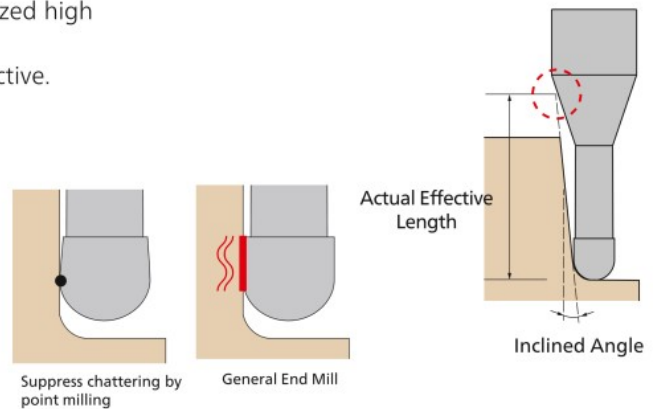
Long neck ball end mill specialized for machining copper alloy
Sharpe cutting edge makes less burr and high quality surface



- Long neck ball end mill specialized for machining copper electrode.
- Sharp edge shearing ability and DLC coating realized high quality and stable a long life machining.
- Machining copper tungsten electrodes is also effective.

※ R accuracy of DRB230 is based on a half value.

- Aluminium Alloy **N**
- Copper Copper Tungsten **N**
- Resin **O**



Unit : mm

Code No.	Radius (R)	Under Neck Length (l ₁)	Length of Cut (l)	Dia. (D)	Neck Dia. (d ₂)	Neck Taper Angle (γ)	Shank Dia. (d)	Overall Length (L)	Actual effective length depending on inclined angle of workpiece				
									30°	1°	1°30'	2°	3°
07-00530-00503	R0.05	0.3	0.07	0.1	0.085	12°	4	45	0.34	0.36	0.37	0.39	0.42
07-00530-00505		0.5	0.07	0.1	0.085	12°	4	45	0.55	0.57	0.60	0.63	0.69
07-00530-00703	R0.075	0.3	0.1	0.15	0.13	12°	4	45	0.35	0.37	0.38	0.40	0.43
07-00530-00705		0.5	0.1	0.15	0.13	12°	4	45	0.56	0.58	0.61	0.64	0.70
07-00530-00710		1	0.1	0.15	0.13	12°	4	45	1.08	1.13	1.18	1.23	1.36
07-00530-01005	R0.1	0.5	0.15	0.2	0.18	12°	4	45	0.56	0.58	0.61	0.63	0.69
07-00530-01007		0.75	0.15	0.2	0.18	12°	4	45	0.82	0.85	0.89	0.93	1.02
07-00530-01010		1	0.15	0.2	0.18	12°	4	45	1.08	1.13	1.18	1.23	1.35
07-00530-01015		1.5	0.15	0.2	0.18	12°	4	45	1.60	1.67	1.75	1.83	2.02
07-00530-01020		2	0.15	0.2	0.18	12°	4	45	2.13	2.22	2.32	2.43	2.68
07-00530-01505	R0.15	0.5	0.2	0.3	0.28	12°	4	45	0.56	0.58	0.60	0.62	0.67
07-00530-01510		1	0.2	0.3	0.28	12°	4	45	1.08	1.12	1.17	1.22	1.34
07-00530-01515		1.5	0.2	0.3	0.28	12°	4	45	1.60	1.67	1.74	1.82	2.00
07-00530-01520		2	0.2	0.3	0.28	12°	4	45	2.12	2.21	2.31	2.42	2.66
07-00530-02005	R0.2	0.5	0.3	0.4	0.37	12°	4	45	0.58	0.60	0.62	0.64	0.69
07-00530-02010		1	0.3	0.4	0.37	12°	4	45	1.10	1.14	1.19	1.24	1.35
07-00530-02015		1.5	0.3	0.4	0.37	12°	4	45	1.62	1.69	1.76	1.84	2.02
07-00530-02020		2	0.3	0.4	0.37	12°	4	45	2.15	2.23	2.33	2.43	2.68
07-00530-02030		3	0.3	0.4	0.37	12°	4	45	3.19	3.32	3.47	3.63	4.01
07-00530-02040		4	0.3	0.4	0.37	12°	4	45	4.23	4.41	4.61	4.83	5.33
07-00530-02050		5	0.3	0.4	0.37	12°	4	45	5.27	5.50	5.75	6.02	6.66
07-00530-02060	6	0.3	0.4	0.37	12°	4	45	6.32	6.59	6.89	7.22	7.99	

How to Order

When you order, indicate DRB230 (R)×(l₁). ※(γ) is reference value.

Machining case

S-029