

## ANCHORING PLATE

Secure granite surface plate to floor

### USE

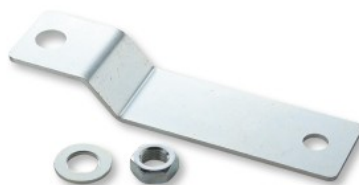
- Anti-tip auxiliary plate for granite surface plate

### MATERIAL

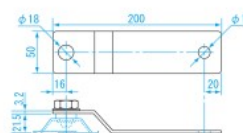
- Standard steel plate

### SPECIFICATIONS

- 4 pcs
- Applicable steel stand model:  
GT-4560J, GT-5050J, GT-5075J, GT-6060J, GT-75100J,  
GT-10100J, GT-10150J, GTW-4560J, GTW-5050J, GTW-5075J,  
GTW-6060J, GTW-75100J, GTW-10100J, GTW-10150J, GTW-10200J



### ● DIMENSIONS Units: mm



Steel stand for SK granite surface plate ▶  
Granite Surface Plate Steel Stand  
**P284**  
~285



Order No.	Model No.
151250	GPL-13

## GRANITE SURFACE PLATE COVER

Protect the plate from scratches or dust



CV-G3030

<p>Precision surface plate ▶ Granite Surface Plate <b>P284</b></p>	<p>T-shape granite surface plate ▶ Granite Surface Plate T type <b>P287</b></p>
<p>Cast Iron Surface Plate ▶ Cast Iron Surface Plate <b>P290</b></p>	



### USE

- Protected surface plate from scratches or dust while not in use
- Suitable for covering board materials

### MATERIAL

- Flexible PVC

Order No.	Model No.	Applicable surface plate
150630	CV-G1520	G1520
150631	CV-G2020	G2020
150632	CV-G2525	G2525
150633	CV-G3030	G3030, G3030T
150634	CV-G3045	G3045, G3045T
150635	CV-G5050	G5050
150636	CV-G4560	G4560, S4560C
150637	CV-G5075	G5075
150638	CV-G6060	G6060
150639	CV-S3030	S3030C
150640	CV-S5050	S5050C

COMPARATOR

GRANITE PRODUCTS

CAST IRON SURFACE PLATE

PARALLEL BLOCK

V BLOCK

SQUARE

STRAIGHT EDGE

PARALLEL CLAMP