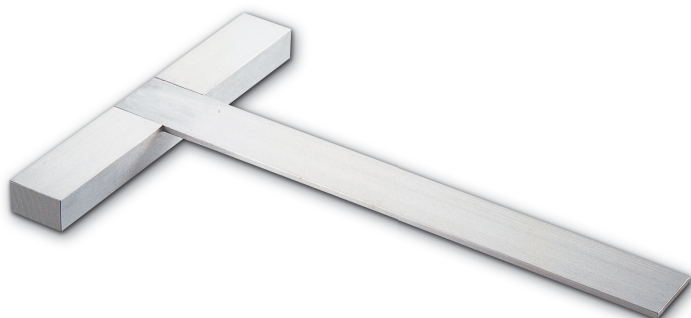
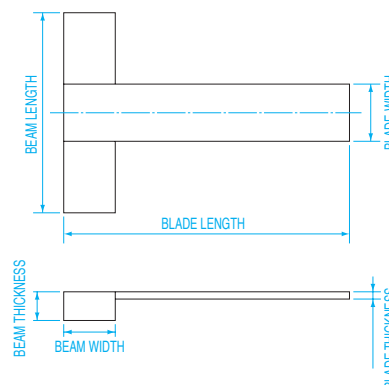




## T- SQUARE



## DIMENSIONS



## FEATURES

- The blade and beam are permanently secured by rivets. The T-square is useful for general engineering work.

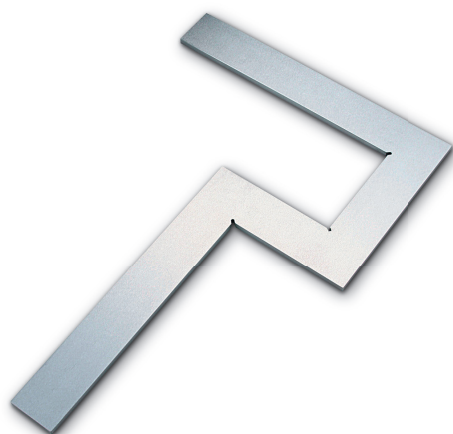
## MATERIAL

- Machine grade carbon steel

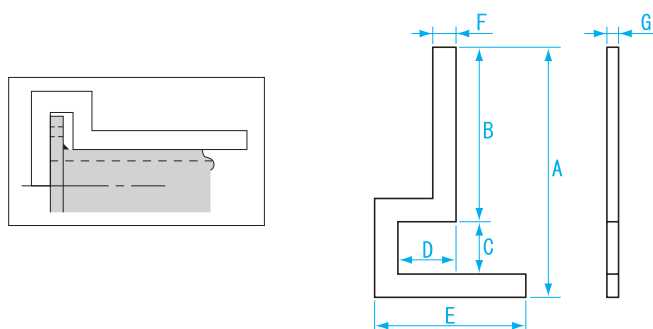
Straightness  $\pm (20 + \frac{L}{10}) \mu\text{m}$  (L: Nominal Size)

| Model No. | Nominal Size (mm) | Blade Length (mm) | Blade Width (mm) | Blade Thickness (mm) | Beam Length (mm) | Beam Width (mm) | Beam Thickness (mm) | Straightness ( $\pm$ mm) | Weight |
|-----------|-------------------|-------------------|------------------|----------------------|------------------|-----------------|---------------------|--------------------------|--------|
| TS-100    | 100               | 100               | 20               | 2.5                  | 70               | 18              | 10                  | 0.03                     | 150g   |
| TS-150    | 150               | 150               | 24               | 3                    | 100              | 20              | 12                  | 0.035                    | 300g   |
| TS-200    | 200               | 200               | 29               | 3.5                  | 140              | 24              | 14                  | 0.04                     | 500g   |
| TS-250    | 250               | 250               | 29               | 3.5                  | 175              | 26              | 16                  | 0.045                    | 800g   |
| TS-300    | 300               | 300               | 35               | 4                    | 200              | 30              | 18                  | 0.05                     | 1.2kg  |
| TS-400    | 400               | 400               | 40               | 5                    | 260              | 34              | 20                  | 0.06                     | 2kg    |
| TS-500    | 500               | 500               | 46               | 5                    | 330              | 36              | 22                  | 0.07                     | 2.9kg  |
| TS-600    | 600               | 600               | 50               | 5                    | 360              | 38              | 24                  | 0.08                     | 3.7kg  |
| TS-1000   | 1000              | 1000              | 65               | 8                    | 640              | 45              | 30                  | 0.12                     | 11kg   |

## FLANGE SQUARE



## DIMENSIONS



Units : mm

| Model No. | A   | B   | C   | D   | E   | F  | G |
|-----------|-----|-----|-----|-----|-----|----|---|
| FS-1      | 300 | 200 | 70  | 80  | 200 | 30 | 4 |
| FS-2      | 400 | 280 | 90  | 120 | 300 | 30 | 4 |
| FS-3      | 750 | 500 | 200 | 250 | 680 | 50 | 6 |

## USE

- Inspection of surfaces with flange, and piping connections

## MATERIALS

- Rolled steel for general structure

| Order No. | Model No. | Nominal Size (mm) | Straightness ( $\pm$ mm) | Weight |
|-----------|-----------|-------------------|--------------------------|--------|
| 003320    | FS-1      | 200×300           | 0.037                    | 800g   |
| 003330    | FS-2      | 300×400           | 0.045                    | 1kg    |
| 003368    | FS-3      | 680×750           | 0.071                    | 4kg    |