

Specification 1

Fluid:
Gas, liquid

Wetted part material:
Wetted parts generally consist of bourdon tube and socket.
These parts are exposed to or in direct contact with the medium under pressure (Gas, liquid).

Purpose	Connecting part	Bourdon tube
General use	C3604* or CAC203	C6872 or SUS316 (Varies depending on required pressure range and additional spec on performance.)
Ammonia use	SUS316*	SUS316
Corrosion-proof use	or SCS14	

* AA10 (φ60) only

Connection: Refer to the document JIS pipe thread in the technical sheet.
G1/4B, G3/8B, G1/2B, R1/4, R3/8, R1/2, Others
*For other connections, please contact us.

Pressure range:
0 to 40kPa → 0 to 100MPa
-0.1 to 0MPa → -0.1 to 2.5MPa
*For details, refer to the minimum scale value table in Specification 4

Accuracy:
JIS1.6 (JIS accuracy class)
Upon request, JIS1.0 product can be manufactured.
(JIS1.0 is available for gauge requiring 1MPa or higher pressure range with nominal size of φ150.)

Specification 2

Unit: mm

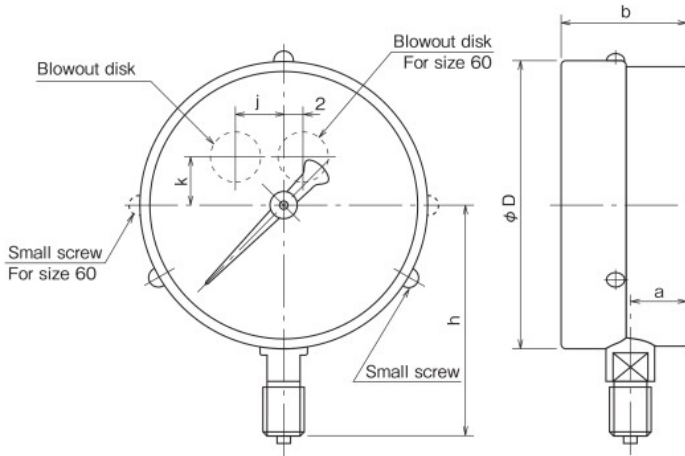
Shape/Dimensions:

Lower connection

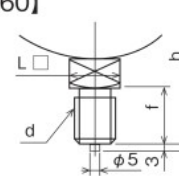
Type A...Direct mount pressure gauge

Weight:

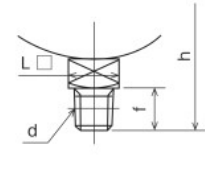
Size	Weight
60	Approx. 200g
150	Approx. 900g



[φ60]

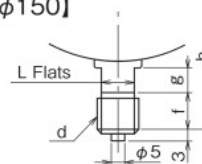


ATG [] B

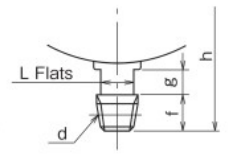


ATR []

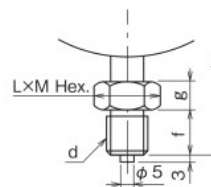
[φ150]



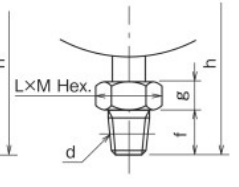
AUG [] B



AUR []



ASG [] B



ASR []

Size	Shape	Case / Dimensions										Model number	
		d	D	a	b	j	k	f	g	L	M		h
60	T	G1/4B, R1/4	65	11.5	32	—	8	16	—	17	—	58	AA10-1□□
150	U	G3/8B, R3/8	153	20	50	20	10	18	12	14	—	110	AG10-1□□
	S	G1/2B, R1/2, 1/2NPT		(30)	(60)			20	12	24	27.7	125	

* () is 0.09MPa and under.