

XHS-C Flexible Coupling - Single Disk Type Additional Size

WEB Selection Tool

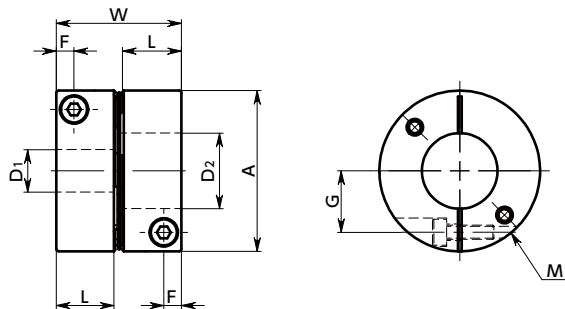
WEB CAD Download

Zero Backlash

High torque

High Rigidity

XHS-C

Outside diameter $\phi 15$

Dimensions

Unit : mm

Part Number	A	L	W	F	G	M	Screw Tightening Torque (N·m)
XHS-15C	15	7.5	15.8	2.1	5	M2	0.45
XHS-19C	19	9.2	19.4	2.6	7	M2	0.5
XHS-25C	25	11	23.1	3.3	9.25	M2.5	1
XHS-27C	27	11	23.1	3.3	10.25	M2.5	1
XHS-34C	34	12.5	26.5	3.75	13	M3	1.5
XHS-39C	39	15.5	32.8	4.5	14.5	M4	3.5
XHS-44C	44	15.5	32.8	4.5	17	M4	3.5
XHS-56C	56	20.5	43.2	6	21	M5	8
XHS-64C	64	24	51.2	7	24	M6	13
XHS-79C	79	30	63.6	8.75	29	M8	28

Part Number	Standard Bore Diameter D1 · D2																											
	3	4	5	6	6.35	8	9.525	10	11	12	14	15	16	17	18	19	20	22	24	25	28	30	32	35	38	40	42	
XHS-15C	●	●	●	●																								
XHS-19C	●	●	●	●	●	●																						
XHS-25C		●	●	●	●	●	●	●	●	●																		
XHS-27C		●	●	●	●	●	●	●	●	●	●	●																
XHS-34C			●	●	●	●	●	●	●	●	●	●	●	●														
XHS-39C				●	●	●	●	●	●	●	●	●	●	●	●	●	●	●										
XHS-44C					●	●	●	●	●	●	●	●	●	●	●	●	●	●	●									
XHS-56C						●	●	●	●	●	●	●	●	●	●	●	●	●	●	●	●	●						
XHS-64C								●	●	●	●	●	●	●	●	●	●	●	●	●	●	●	●	●	●	●	●	●
XHS-79C												●	●	●	●	●	●	●	●	●	●	●	●	●	●	●	●	●

- All products are provided with hex socket head cap screw.
- Recommended dimensional allowances of applicable shaft diameter are h6 and h7.
- In case of mounting on D-cut shaft, be careful about the position of the D-cut surface of the shaft. → P.257

Additional Keyway at Shaft Hole → P.788

Cleanroom Wash & Packaging → P.792

Change to Stainless Steel Screw → P.790

Available / Add'l charge

Available / Add'l charge

Please feel free to contact us