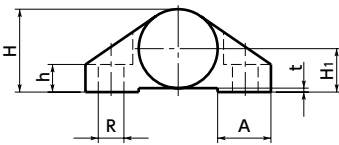
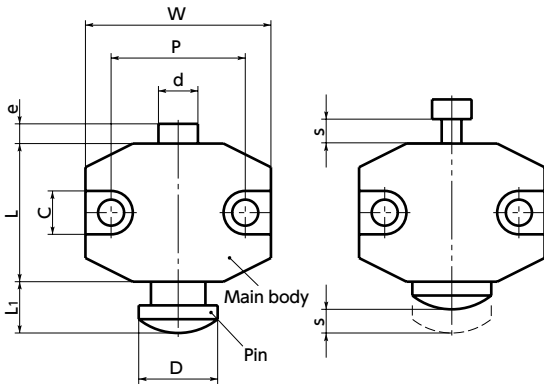


PST / PSTS / PST-N Spring Stop



WEB Selection Tool WEB CAD Download SUS Stainless steel



- For locating work.
- Pin materials can be selected by a product code. **1**

PST — Steel pin
PSTS — Stainless steel pin
PST-N — Plastic pin

• Material/Finish

RoHS Compliant

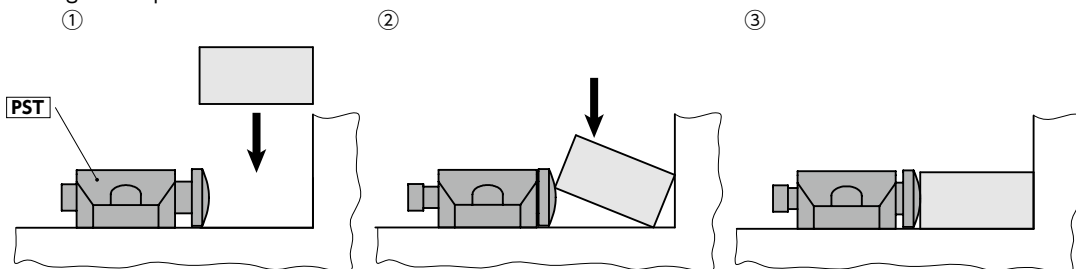
	PST	PSTS	PST-N
Main body	Equivalent to SUS303	Equivalent to SUS303	Equivalent to SUS303
Pin	S45C (hardness: 40 - 45 HRC) Ferrosferic Oxide Film (Black)	SUS440C (hardness: 55 - 60 HRC)	Polyacetal (hardness: 94 HRM)
Spring	SUS631J1	SUS631J1	SUS631J1

PST Steel Pin PSTS Stainless Steel Pin PST-N Plastic Pin

Unit : mm

Part Number	D	s	L	L ₁	d	H	H ₁	h	W	e	A	t	P	C	R	Load (N) min./max.	Mass (g)
PST-10	10	3	20	6	5.5	10.5	5.5	4.8	23	3	6.5	0.5	17	6	3.4	21 / 43	60
PST-15	15	4.5	26	9	7	15.5	8	6	34	4	11	1	25	8	4.5	39 / 84	70
PST-20	20	6	35	13	8.5	21	11	7	47	5	13.5	1	34	11	6.6	32 / 161	180
PSTS-10	10	3	20	6	5.5	10.5	5.5	4.8	23	3	6.5	0.5	17	6	3.4	21 / 43	60
PSTS-15	15	4.5	26	9	7	15.5	8	6	34	4	11	1	25	8	4.5	39 / 84	70
PSTS-20	20	6	35	13	8.5	21	11	7	47	5	13.5	1	34	11	6.6	32 / 161	180
PST-10-N	10	3	20	6	5.5	10.5	5.5	4.8	23	3	6.5	0.5	17	6	3.4	21 / 43	60
PST-15-N	15	4.5	26	9	7	15.5	8	6	34	4	11	1	25	8	4.5	39 / 84	70
PST-20-N	20	6	35	13	8.5	21	11	7	47	5	13.5	1	34	11	6.6	32 / 161	180

• Usage example



- Part number specification

PST-10-N
1 **2** **1**

Cleanroom Wash & Packaging → P.792

Vibration Resistant → P.795

Laser Marking → P.806

Please feel free to contact us

Not Available

Not Available