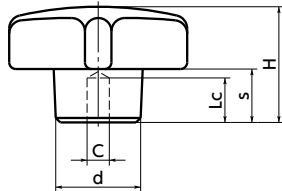
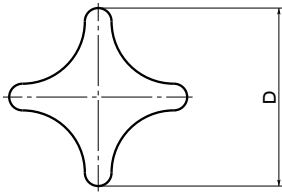


# CK / CKT Star Knob

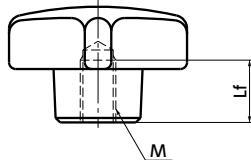
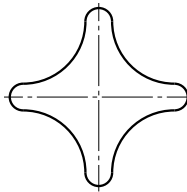


WEB Selection Tool    WEB CAD Download

**CK**



**CKT**



- Pilot hole / female screw can be selected by a product code.

**CK** — Pilot Hole

**CKT** — Female Screw

- Material/Finish

RoHS Compliant

	CK / CKT
Main body	FC200 Wrinkle Baking Paint (black)

## CK Pilot Hole

Unit : mm

Part Number	D	C	Lc	H	s	d	Mass (g)
<b>CK-40</b>	40	5	10	25	13	18	75
<b>CK-50</b>	50	5	10	32	18	22	135
<b>CK-63</b>	63	5	10	40	23	26	270

## CKT Female Screw

Unit : mm

Part Number	D	M (Coarse)	Lf	H	s	d	Mass (g)
<b>CKT-40</b>	40	M8	14	25	13	18	75
<b>CKT-50</b>	50	M10	18	32	18	22	135
<b>CKT-63</b>	63	M12	22	40	23	26	270

- Part number specification

**CK - 40**

Cleanroom Wash & Packaging → P.792	Screw Combination → P.798	Screw Length Adjustment → P.796	Vibration Resistant → P.795	Laser Marking → P.806
Not Available	Female screw only/ Add'l charge	Not Available	Not Available	Not Available