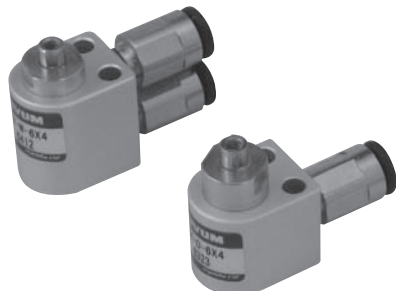


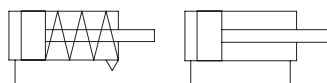
Miniature air cylinder with push-in connector

MKY Series



- Best suitable for space-saving design.
- You can select the most suitable type that conforms to your desired cylinder diameter, stroke and thrust.
- A mounting through hole is provided on the main housing.
- A female threading is provided at the end of the rod.
- One touch coupling is mounted.

Symbol



Single acting
extending type

Double acting

How to order

MKY	—	□	—	□
		Acting type		Bore size × stroke
O		Single acting extending type		φ4.5 × 3 φ8 × 4
W		Double acting(φ6,φ8,φ10 only)		φ4.5 × 6 φ8 × 8
				φ6 × 4 φ10 × 5
				φ6 × 8 φ10 × 10

Specifications

Bore size	mm	φ4.5	φ6	φ8	φ10
Operating type		Single acting extending type/Double acting			
Fluid		Non lubricated compressed air			
Proof pressure	MPa	0.9			
Max.operating pressure	MPa	0.6			
Min.operating pressure	MPa	0.2			
Ambient and fluid temp.	°C	0 ~ 60 *1)			
Cushion		Without			
Stroke allowance	mm	0 ~ +1.0			
Piston speed range	mm / s	50 ~ 750			

*1) When using under 5°C , dry air should be supplied to prevent drain from freezing.

Standard stroke

Bore size (mm)	Standard stroke
4.5	3, 6
6	4, 8
8	4, 8
10	5, 10