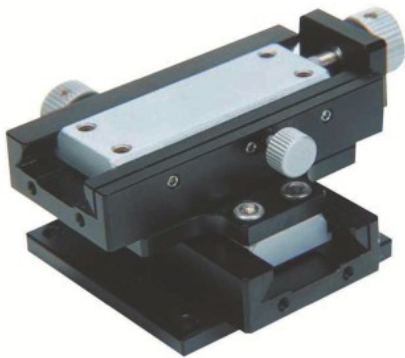
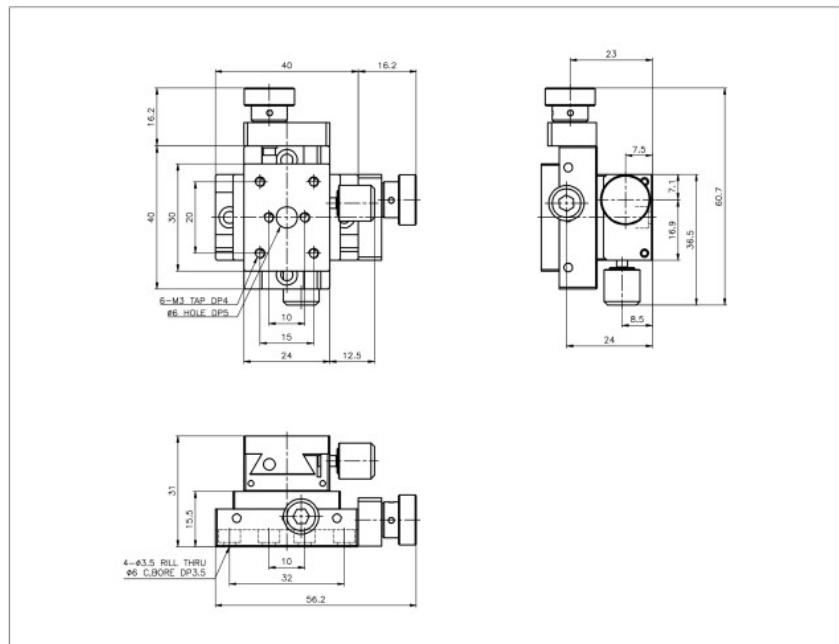


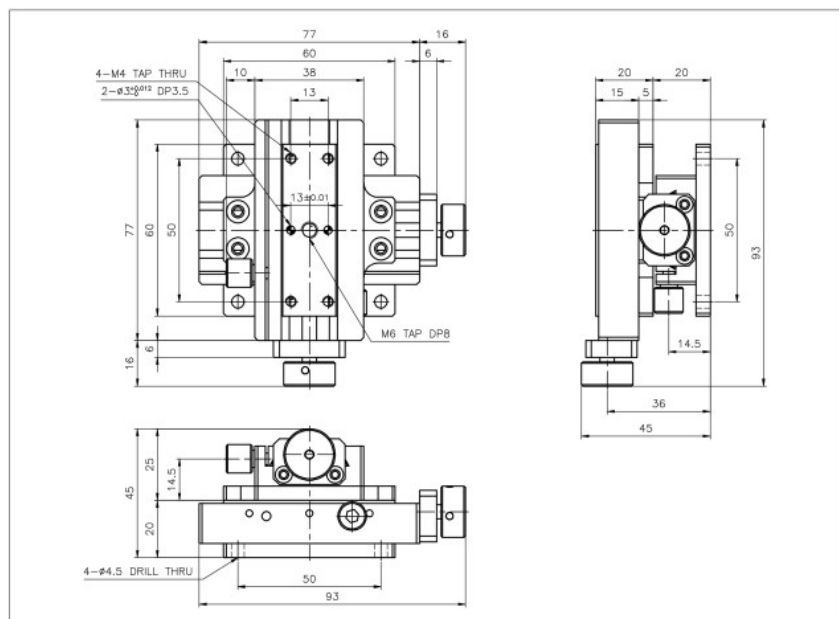
D2-216-L6



D2-716-L6



D2-716-L6



SPECIFICATION	D2-216-L6	D2-716-L6
Table Dimension(mm)	24×30	18×60
Travel Range(mm)	±4	±7.5
Travel Guide	Dovetail Type, Screw	
Readable Resolution(mm)	-	
Parallelism(mm)	0.05	0.06
Straightness(mm)	0.03	
Load Capacity(kg)	3.3	4.5
Material	Brass	Brass/Aluminum
Weight(kg)	0.2	0.9