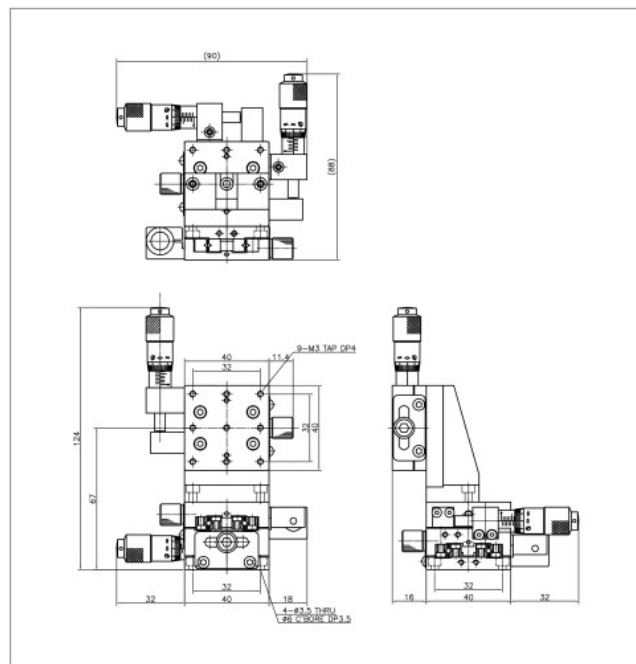


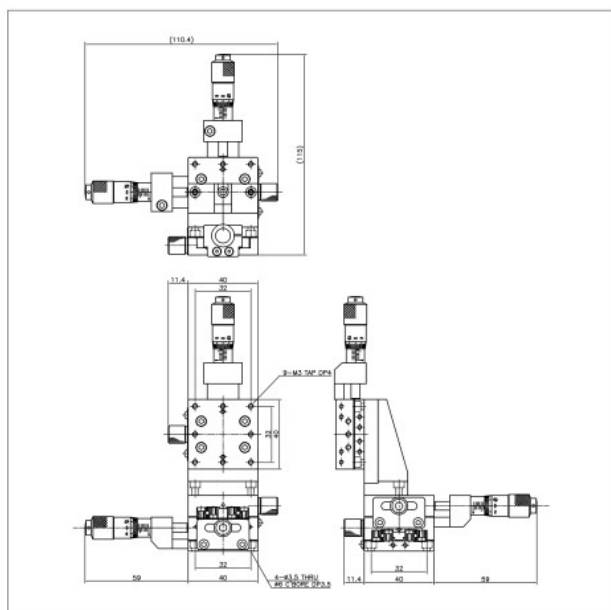
M3-439-L1



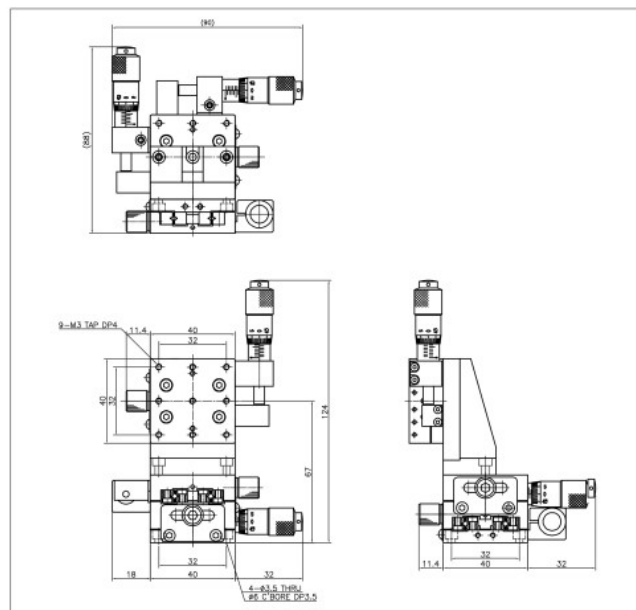
M3-439-L1



M3-439-C1



M3-439-R1



SPECIFICATION	M3-439-L1, R1, C1
Table Dimension(mm)	40×40
Travel Range(mm)	±6.5
Travel Guide	Cross Roller Guide
Readable Resolution(mm)	0.01
Parallelism(mm)	0.03
Running Parallelism(mm)	0.01
Straightness(mm)	0.003
Load Capacity(kg)	1
Material	Slim Steel
Weight(kg)	0.7