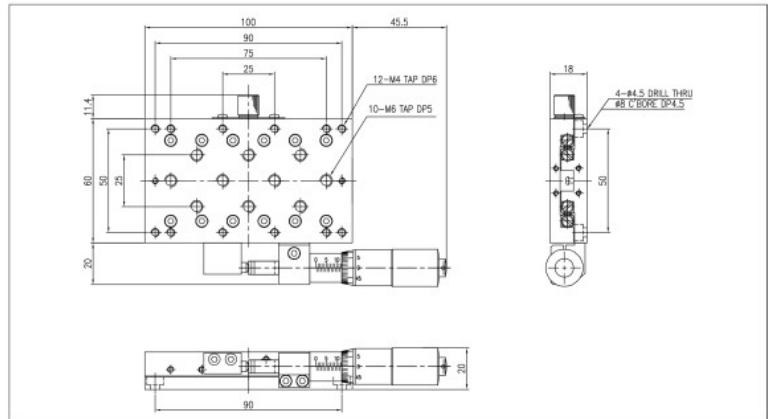
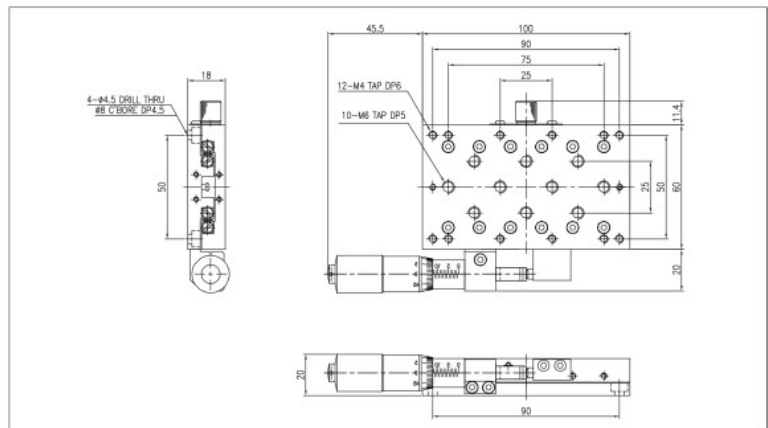


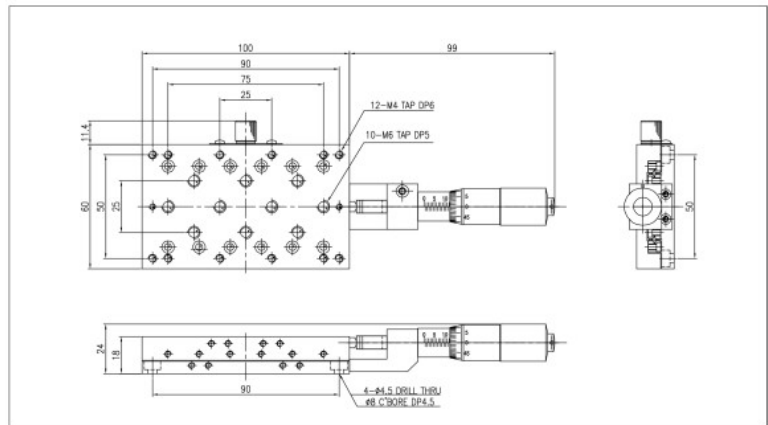
## M1-6137-L1



## M1-6137-R1



## M1-6137-C1



| SPECIFICATION           | M1-6137-L1,R1,C1         |
|-------------------------|--------------------------|
| Table Dimension(mm)     | 60×100                   |
| Travel Range(mm)        | ±12.5                    |
| Travel Guide            | Cross Roller Guide       |
| Readable Resolution(mm) | 0.01                     |
| Parallelism(mm)         | 0.03                     |
| Running Parallelism(mm) | 0.015                    |
| Straightness(mm)        | 0.005                    |
| Load Capacity(kg)       | 6/10                     |
| Material                | Slim Aluminum/Slim Steel |
| Weight(kg)              | 0.9                      |