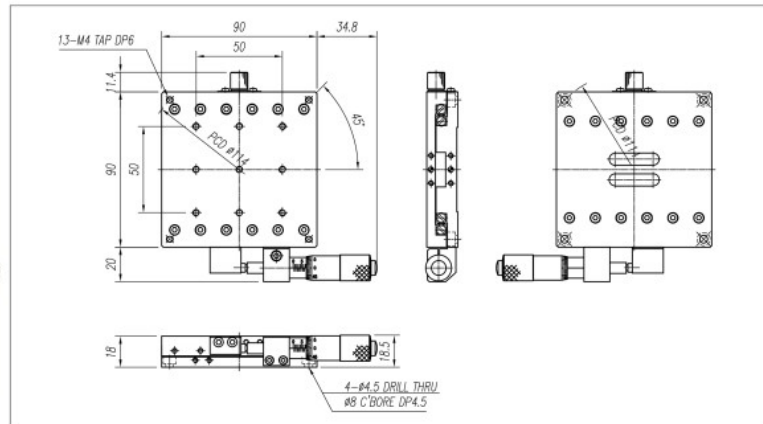


M1-937-L1

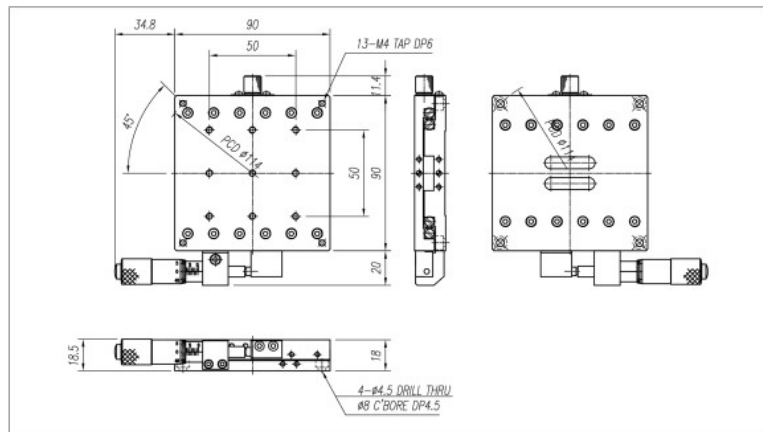


M1-937-L1

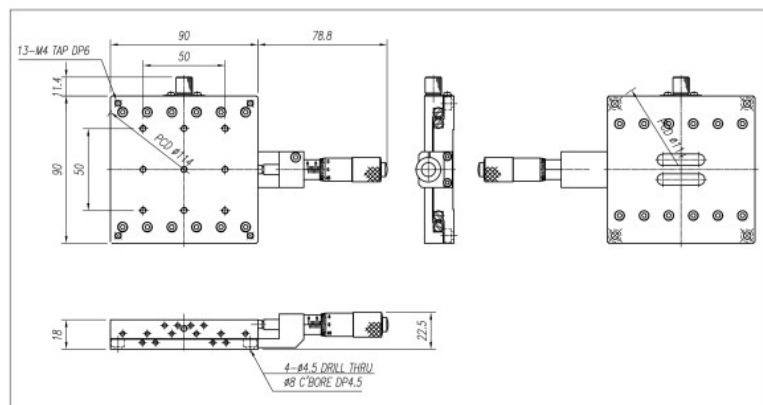
M1-937-R1



M1-937-R1



M1-937-C1



SPECIFICATION	M1-937-L1, R1, C1
Table Dimension(mm)	90×90
Travel Range(mm)	±7.5
Travel Guide	Cross Roller Guide
Readable Resolution(mm)	0.01
Parallelism(mm)	0.03
Running Parallelism(mm)	0.02
Straightness(mm)	0.008
Load Capacity(kg)	6
Material	Slim Aluminum
Weight(kg)	0.56