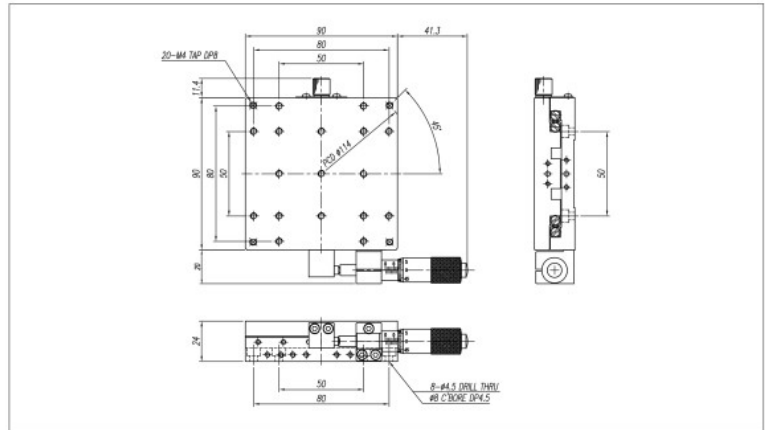


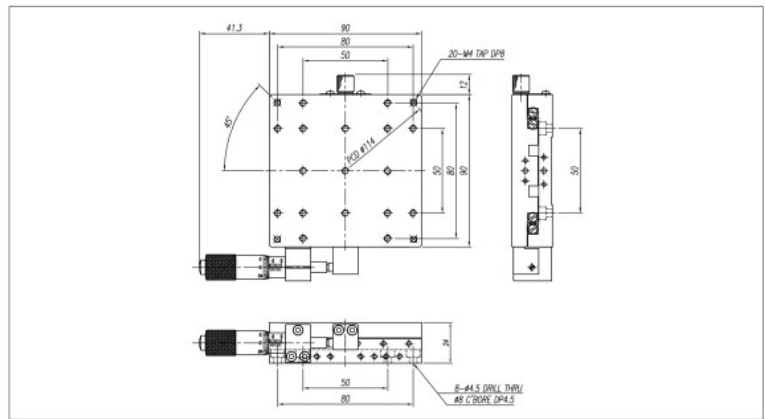
## M1-930-L1



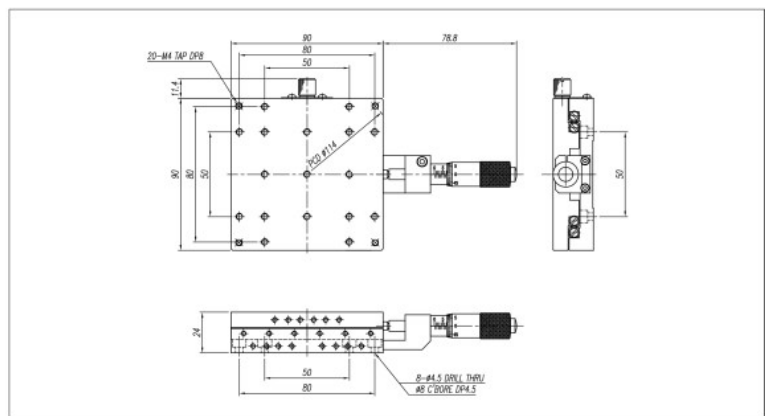
M1-930-L1



## M1-930-R1



## M1-930-C1



SPECIFICATION	M1-930-L1, R1, C1
Table Dimension(mm)	90×90
Travel Range(mm)	±7.5
Travel Guide	Cross Roller Guide
Readable Resolution(mm)	0.01
Parallelism(mm)	0.03
Running Parallelism(mm)	0.015
Straightness(mm)	0.005
Load Capacity(kg)	10
Material	Steel
Weight(kg)	1.5