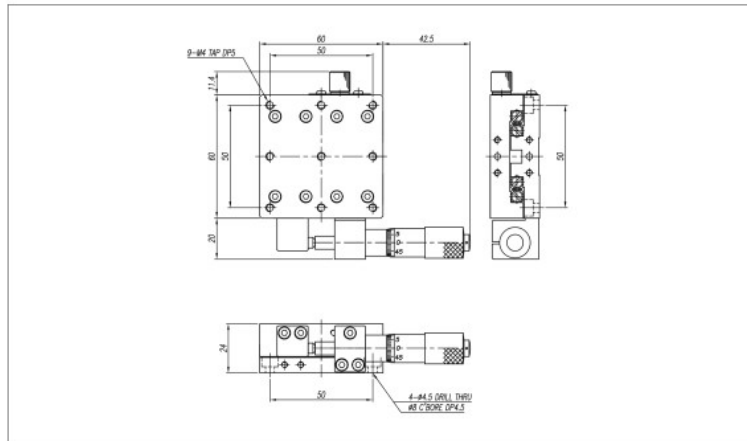


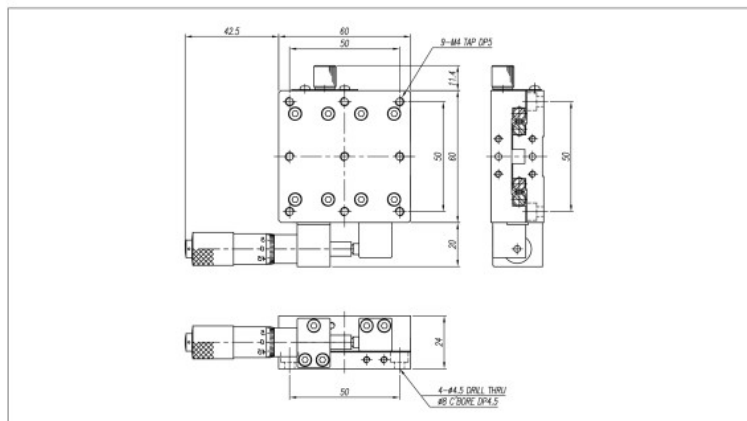
M1-630-L1



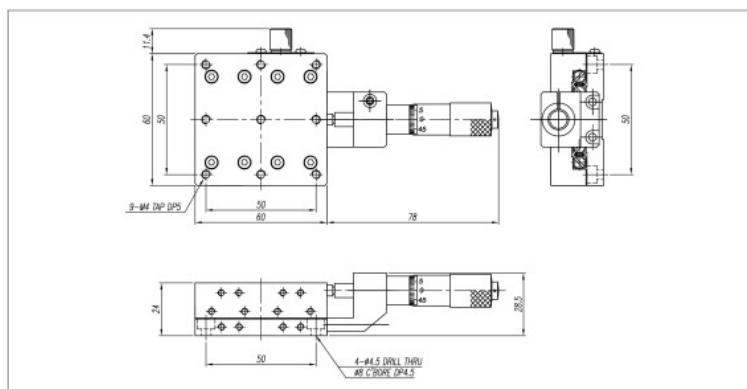
M1-630-L1



M1-630-R1



M1-630-C1



SPECIFICATION	M1-630-L1, R1, C1
Table Dimension(mm)	60×60
Travel Range(mm)	±6.5
Travel Guide	Cross Roller Guide
Readable Resolution(mm)	0.01
Parallelism(mm)	0.03
Running Parallelism(mm)	0.015
Straightness(mm)	0.005
Load Capacity(kg)	10
Material	Steel
Weight(kg)	0.7