

# CPE Models

COUPLINGS

ETP BUSHINGS

ELECTROMAGNETIC CLUTCHES & BRAKES

SPEED CHANGERS & REDUCERS

INVERTERS

LINEAR SHAFT DRIVES

TORQUE LIMITERS

ROSTA

SERIES

- Metal Disc Couplings **SERVOFLEX**
- High-rigidity Couplings **SERVORIGID**
- Metal Slit Couplings **HELI-CAL**
- Metal Coil Spring Couplings **BAUMANNFLEX**
- Pin Bushing Couplings **PARAFLEX**
- Link Couplings **SCHMIDT**
- Dual Rubber Couplings **STEPFLEX**
- Jaw Couplings **MIKI PULLEY STARFLEX**
- Jaw Couplings **SPRFLEX**
- Plastic Bellows Couplings **BELLOWFLEX**
- Rubber and Plastic Couplings **CENTAFLEX**

MODELS

CPE

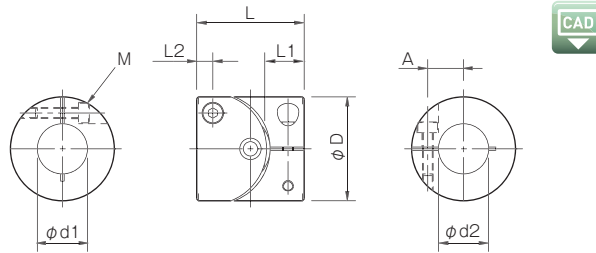
CPU

## Specifications

Model	Torque		Misalignment		Max. rotation speed [min <sup>-1</sup> ]	Torsional stiffness [N-m/rad]	Moment of inertia [kg-m <sup>2</sup> ]	Mass [kg]
	Nominal [N-m]	Max. [N-m]	Parallel [mm]	Angular [°]				
CPE-19	0.7	1.4	0.2	1	6000	500	$0.69 \times 10^{-6}$	0.015
CPE-29	2	4	0.2	1	6000	700	$5.80 \times 10^{-6}$	0.050
CPE-39	5	10	0.2	1	6000	1900	$18.50 \times 10^{-6}$	0.080

\* Torques for CPE-19 are values when the bore diameter is at least equal to 4 mm.  
 \* Max. rotation speed does not take into account dynamic balance.  
 \* The moment of inertia and mass are measured for the maximum bore diameter.

## Dimensions



Model	d1 · d2		D	L	L1	L2	M	A	Unit [mm]
	Min.	Max.							
CPE-19	3	8	19	19.4	6	3	M2.5	6	
CPE-29	6	14	29	30	9.5	4.5	M3	10	
CPE-39	8	20	39	40	12.5	6	M4	14	

\* Insert the shaft to at least the dimension L1. (Note that the shaft cannot go all the way through.)  
 \* The recommended processing tolerance for paired mounting shafts is the h7 class.

## Standard Bore Diameter

Model	Standard bore diameter d1, d2 [mm]																
	3	4	5	6	6.35	7	8	9.525	10	11	12	14	15	16	18	19	20
CPE-19	○	●	●	●	●	●	●										
CPE-29				●	●	●	●	●	●	●	●	●	●	●	●	●	●
CPE-39							●	●	●	●	●	●	●	●	●	●	●

\* Torque on the CPE-19 with a bore diameter of 3 mm is limited by holding force in the shaft coupling component, so nominal torque is 0.4 N-m and maximum torque is 0.8 N-m.  
 \* Bore diameters between the minimum and maximums shown in the dimensions table are compatible, but bore diameters other than those shown in the above table require a separate bore drilling charge.

### How to Place an Order

CPE-19-6B-6B

Size    Bore diameter: d1 (Small diameter) - d2 (Large diameter)  
 B: Clamping hub