

## Product Makeup

### MX Component

Model name	Product name	Quantity
SW4DNC-ACT-E (English version package)  (Standard license product)	MX Component CD-ROM	1
	Installation Instructions (This document)	1
	End-user software license agreement	1
	Software registration notice	1
	License certificate	1
SW4DNC-ACT-EA (English version package)  (Volume license product)	MX Component CD-ROM	1
	Installation Instructions (This document)	1
	End-user software license agreement	1
	Software registration notice	1
	License certificate	n*1

\*1 : Number of licenses

### MX Sheet

Model name	Product name	Quantity
SW2DNC-SHEET-E (English version package)  (Standard license product)	MX Sheet CD-ROM	1
	Installation Instructions (This document)	1
	End-user software license agreement	1
	Software registration notice	1
	License certificate	1
SW2DNC-SHEET-EA (English version package)  (Volume license product)	MX Sheet CD-ROM	1
	Installation Instructions (This document)	1
	End-user software license agreement	1
	Software registration notice	1
	License certificate	n*1

\*1 : Number of licenses

Model name	Product name	Quantity
SW2DNC-SHEETSET-E (English version package)	MX Component CD-ROM	1
	MX Sheet CD-ROM	1
	Installation Instructions (This document)	1
	End-user software license agreement	2
	Software registration notice	1
	License certificate	2

## Acknowledgements

- We do not guarantee those commercially available Microsoft® Windows® Operating System products that are introduced in this manual.
- This software's copyright is owned by Mitsubishi Electric Corporation.
- This product (including manual) can be used under the Software License Agreement only.
- We do not take any responsibilities for the consequences of operating this product (including manual).

## Installation of USB driver

In order to communicate with a programmable controller CPU via USB, a USB driver needs to be installed.  
For a USB driver installation procedure, refer to MX Component Version 4 Operating Manual.

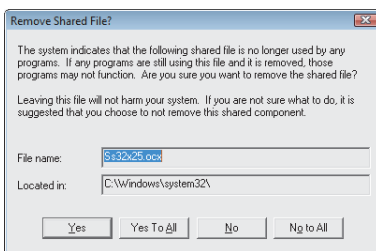
## Uninstallation

Delete the product from the personal computer.

### 1. Uninstall the product from the control panel of Windows.

#### Point

- Uninstalling deletes all the settings within "Communication Setup Utility".  
To avoid this, export the file storing the settings.
- If the following screen appears during the uninstallation procedure, click the  button.



Microsoft, Windows, Windows Vista are registered trademarks or trademarks of Microsoft Corporation in the United States and other countries.  
The company names, system names and product names mentioned in this manual are either registered trademarks or trademarks of their respective companies.  
In some cases, trademark symbols such as "™", "®" are not specified in this manual.