

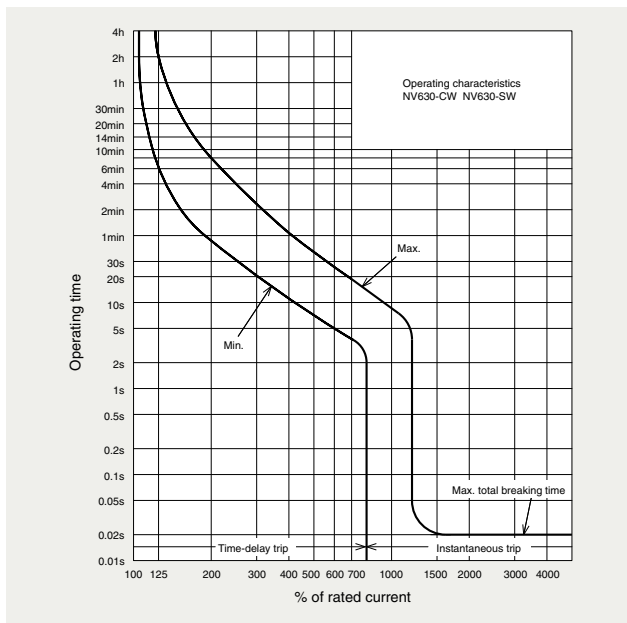
# NV630-CW NV630-SW



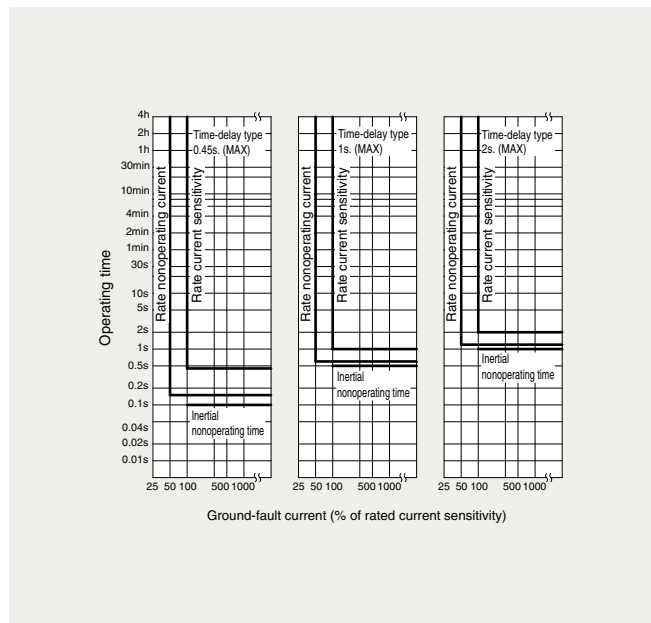
NV630-SW

Model		NV630-CW	NV630-SW
Number of poles		3	
Rated operational voltage Ue (V AC)		100-440 Multi-voltage type	
Rated current In (A)		500 600 630	
High-speed type	Rated current sensitivity IΔn (mA)	-	
	Max. operating time at 5IΔn (s)	-	
Time-delay type	Rated current sensitivity IΔn (mA)	100 · 200 · 500 Selectable	
	Max. operating time at 5IΔn (s)	0.45 · 1.0 · 2.0 Selectable	
	Max. inertial non-operating time at 2IΔn (s)	0.1 · 0.5 · 1.0	
Earth-leakage indication system		Button	
Rated short-circuit breaking capacity (kA) IEC 60947-2 (Icu/Ics) EN 60947-2	AC	440V	36/18 42/42
		400V	36/18 50/50
		230V	50/25 85/85
Standard attached parts (Front connection)		Mounting screw: M6x72 (4pcs) Insulation barrier: (4pcs)	

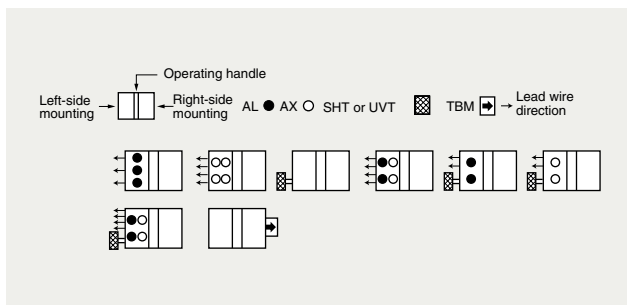
## Operating Characteristics



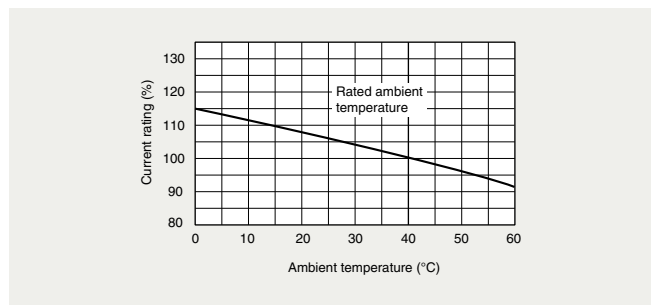
## Earth Leakage Tripping Characteristics



## Internal Accessories



## Temperature Compensation Curve



## External Accessories

Accessories	Type name	Accessories	Type name
Operating handle	F F-4S	Auxiliary handle	HT HT-4SW
	V V-4S	Terminal cover	Large TC-L TCL-4SW3
Mechanical interlock	MI MI-4SW3		Skeleton TTC TTC-4SW3
			Rear BTC BTC-4SW3
Handle lock device		HL HL-4SW	
		HL-S HLS-4SW	
Electrical operation device		(*1)	

Note \*1 Specify the operation method and voltage. Order in combination with the breaker unit.

## Internal Wiring Diagram

