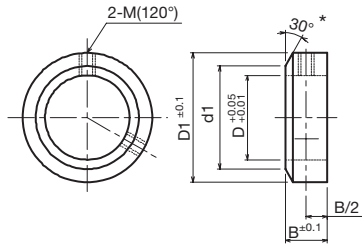


# Shaft Collar <SSC>


## ● Order No. Example

### SSC0508

Shaft Collar No.



 Stainless Steel  304

 Comes with two set screws

### ◇ List of Shaft Collar Sizes

Shaft Collar No.	Shaft Hole Diameter $\phi D \begin{smallmatrix} +0.05 \\ +0.01 \end{smallmatrix}$	Total Width $B \pm 0.1$	Outer Diameter $D_1$	d1	Hole for Set Screws $M$	Set Screws $M \times \text{Length}$	Mass (g)	¥
SSC 0406	4	6	12	—	M 4	M 4× 4	5	
SSC 0408	4	8	12	—	M 4	M 4× 4	7	
SSC 0506	5	6	14	—	M 4	M 4× 4	7	
SSC 0508	5	8	14	—	M 4	M 4× 4	9	
SSC 0608	6	8	15	—	M 4	M 4× 4	10	
SSC 0610	6	10	16	—	M 4	M 4× 4	14	
SSC 0808	8	8	16	13	M 4	M 4× 4	10	
SSC 0810	8	10	18	—	M 4	M 4× 4	17	
SSC 1008	10	8	18	16	M 4	M 4× 4	12	
SSC 1010	10	10	20	—	M 4	M 4× 4	19	
SSC 1208	12	8	22	20	M 4	M 4× 4	17	
SSC 1210	12	10	26	—	M 5	M 5× 6	34	
SSC 1310	13	10	26	—	M 5	M 5× 6	32	
SSC 1510	15	10	25	24	M 5	M 5× 6	25	
SSC 1512	15	12	28	—	M 5	M 5× 6	42	
SSC 1610	16	10	28	24	M 5	M 5× 6	33	
SSC 1612	16	12	28	—	M 5	M 5× 6	40	
SSC 1710	17	10	30	26	M 6	M 6× 6	38	
SSC 2012	20	12	32	29	M 6	M 6× 6	47	
SSC 2015	20	15	32	—	M 6	M 6× 6	59	
SSC 2515	25	15	38	37	M 6	M 6× 6	77	
SSC 2518	25	18	42	—	M 8	M 8× 8	128	
SSC 3016	30	16	45	42	M 8	M 8× 8	112	
SSC 3020	30	20	49	—	M 8	M 8× 8	187	
SSC 3520	35	20	59	—	M 8	M 8× 8	281	
SSC 4022	40	22	72	—	M 10	M 10×12	490	
SSC 4522	45	22	75	—	M 10	M 10×12	492	
SSC 5025	50	25	79	—	M 10	M 10×12	581	

\* Exterior may differ slightly from drawings according to d1 dimensions.