

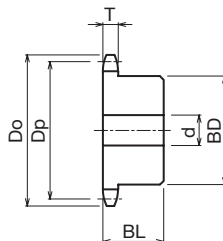
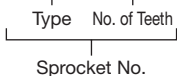
# K35B



## K Sprocket Former B-type

### ● Order No. Example

## K35B 12



- Chain ..... No.35
- Chain Pitch ..... (P)9.525mm
- Bushing Link Inner Width ... (W)4.78 mm
- Bushing Outside Diameter ... (Dr)5.08 mm
- Tooth Width ..... (T)4.3 mm

- m Carbon Structural Steel
- h High-frequency Hardened Teeth

Type	No. of Teeth	Outer Diameter Do	Pitch Diameter Dp	Shaft Hole Diameter d			Boss Diameter BD	Boss Length BL	Shape	Weight kg	¥	Semi-F ¥											
				Prepared Hole Product	Minimum	Maximum																	
<b>K35B</b>	10	35	30.82	8	9	10	20	20	Ground Specification	0.06													
	11	38	33.81	8	9	10	20	20		0.08													
	12	41	36.80	9	10	14	27	20		0.09													
	13	44	39.80	9	10	14	27	20		0.10													
	14	The dimensions for K35B14 to 23 are relocated, as they are equivalent to those of NK35B14 to 23. Please see NK35B P150 about this product.																					
	15																						
	16																						
	17																						
	18																						
	19																						
	20																						
	21	Ground Specification																					
	22												78	72.97	11	12	38	60	25	0.59			
	23												81	76.00	11	12	38	60	25	0.60			
	24												84	79.02	11	12	38	60	25	0.60			
	25												90	85.07	11	12	38	60	25	0.62			
	26												96	91.12	11	12	38	60	25	0.65			
	27												105	100.20	11	12	38	60	25	0.68			
	28	118	112.31	12	13	35	55	35		0.91													
29	121	115.34	12	13	35	55	35	0.93															
30	124	118.37	12	13	35	55	35	0.95															
31	127	121.40	12	13	35	55	35	0.97															



Sprocket No. and Quantity



\* Since we also manufacture sizes other than those in the catalog, and machine shaft holes/keys/taps, etc., depending on your request, please contact our company's sales office for details.



Same-day shipping

Postage

\* Please refer to P24 to P33 for the Semi-F Series <Complete Product> order method.