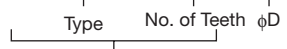


FBP15B/FBN15B

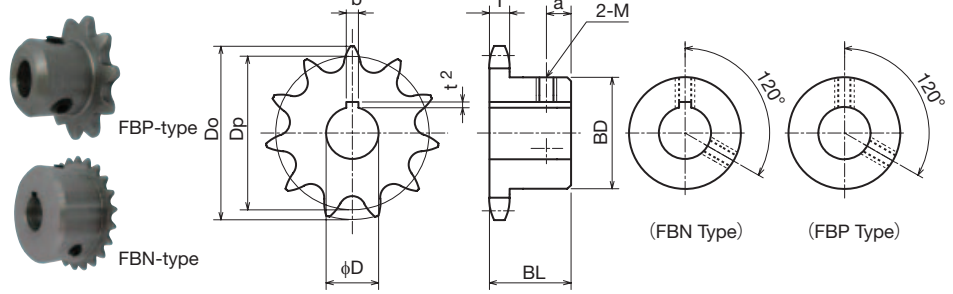
FBP/FBN Finished Bore Sprocket Round Tap Hole New JIS Keyway Specification

Order No. Example

FBP15B 15 D8
FBN15B 30 D12



Sprocket No.



- Chain No.15
- Chain Pitch (P)4.7625mm
- Bushing Link Inner Width (W)2.38 mm
- Bushing Outside Diameter (Dr)2.48 mm
- Tooth Width (T)2.0 mm

 Carbon Structural Steel

Shaft Hole Machined Specification

Sprocket No. Type	No. of Teeth	phi D ^{H7}	Outer	Pitch	Boss	Boss	a	Weight	¥
			Diameter Do	Diameter Dp	Diameter BD	Length BL			
FBP 15B	11	5	19.0	16.90	11	10	4	9	
	12	5 6	20.5	18.40	12	10	4	10	
	13	5 6 8	22.0	19.90	14	10	4	14	
	14	8	23.5	21.40	15	12	5	17	
	15	8	25.0	22.91	17	12	5	22	
FBP 15B	16	10	26.5	24.41	18	12	5	23	
	17	10	28.0	25.92	20	14	6	32	
	18	10	29.5	27.43	22	14	6	40	
	20	10	32.5	30.44	24	14	6	49	
FBN 15B	24	10 12 15	39.0	36.49	30	16	7	88	
	26	12 15 16	42.0	39.51	33	16	7	104	
	28	12 15 16	45.0	42.54	37	16	7	131	
	30	12 15 16	48.0	45.56	39	16	7	147	
	33	12 15 16	52.5	50.10	40	18	8	178	
35	12 15 16	55.5	53.13	40	18	8	182		

phi D ^{H7} Reference	Keyway bxt2	Set Screw M
5 - 7	-	3
8 - 9	-	4
10	3 x 1.4	4
12	4 x 1.8	5
14 - 17	5 x 2.3	6
18 - 22	6 x 2.8	6



Sprocket No. ϕD^{H7} and Quantity



* Since we also manufacture sizes other than those in the catalog, and machine shaft holes/keys/taps, etc., depending on your request, please contact our company's sales office for details.



Same-day shipping



* Finished Hole Tolerance
Less than $\phi 8$: H8
 $\phi 8$ or more: H7