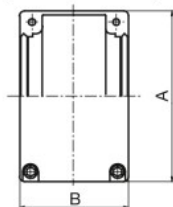


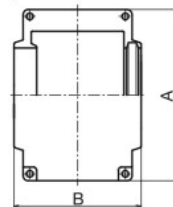
Format 1
3012C to 8022C

(Method with O-ring seals on both sides)



Format 2
10020C to 12022C

(method where one side is fixed and the other is a Z-type oil seal)



3012L

Coupling No.

* You may order just the chain if required.

● **Order Product Code**
3012H Body
(2 MB sprockets + 1 chain)
3012C Case } 1 Set



* Content of the Body

◇ Dedicated Case

m Aluminum

◇ Dedicated Chain **m** Steel

Product Code	A	B	Weight (kg)
3012C	69	63	0.2
4012C	77	72	0.3
4014C	84	75	0.3
4016C	92	75	0.4
5014C	101	85	0.5
5016C	111	85	0.5
5018C	122	85	0.6
6018C	142	106	0.9
6020C	158	105	1.1
6022C	168	117	1.3
8018C	190	129	2.1
8020C	210	137	2.5
8022C	226	137	2.9
10020C	281	153	4.4
12018C	307	181	5.2
12022C	357	181	7.0

Product Code	Weight (kg)
3012L	0.1
4012L	0.2
4014L	0.2
4016L	0.3
5014L	0.4
5016L	0.5
5018L	0.6
6018L	1.0
6020L	1.2
6022L	1.3
8018L	2.3
8020L	2.5
8022L	2.7
10020L	4.8
12018L	7.6
12022L	9.3

A1 Multi-EP Grease No.2

● **Order Product Code**

MB 4012

Type Model No.

Chain Coupling No.

m Carbon Structural Steel **h** High-frequency Hardened Teeth

Body Dimensions		Chain Coupling No.		Prepared Hole	Shaft Hole Machining Limits		Weight kg
BL	BD	Type	Product Code		Minimum	Maximum	
29.8	26.5	MB Minimum Bore Shaft Hole Non-machined Product Body Side	MB3012	12	14	16	0.2
36.0	36.0		MB4012	12	14	22	0.3
36.0	45.0		MB4014	12	14	30	0.5
40.0	51.0		MB4016	14.5	16	32	0.6
45.0	56.0		MB5014	14	16	35	0.9
45.0	63.0		MB5016	16	18	40	1.1
45.0	73.0		MB5018	16	18	45	1.6
56.0	88.0		MB6018	20	22	55	2.6
56.0	102.5		MB6020	20	22	60	3.6
56.0	115.0		MB6022	20	22	70	4.6
63.0	114.8		MB8018	20	22	80	5.2
65.0	125.0		MB8020	20	22	85	7.0
71.0	143.0	MB8022	20	22	100	8.8	
80.0	162.0	MB10020	25	27	110	14.1	
90.0	173.0	MB12018	35	37	125	19.7	
100.0	213.0	MB12022	35	37	140	31.4	

* An MB sprocket is on one side of the body (only 1 sprocket).