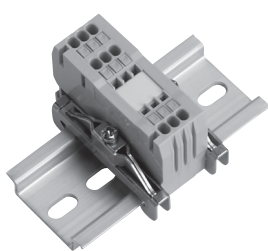


Compact series (rail type) TW and TTW Series

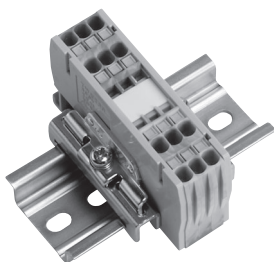
Standard type, Type only for grounding, Type with wire insertion indicator

Application	Type name		Number of contents	External dimensions (mm)				General mass per pole (g)	
	With button	Without button		A	B	C	D		
Terminal unit									
600V 10A 1.25mm ² (AWG16)	1 to 2	TW 15 D	TW 15 DN	50P	49.3	32	3.5	—	5
	2 to 2	TW 16 D	TW 16 DN	50P	58.8	32	3.5	—	6
600V 20A 2mm ² (AWG14)	1 to 2	TW 25 D	TW 25 DN	50P	54.4	37.5	4.6	—	9
	2 to 2	TW 26 D	TW 26 DN	50P	66	37.5	4.6	—	11
600V 30A 5.5mm ² (AWG10)	1 to 2	TW 35 D	TW 35 DN	25P	68.9	38	6	—	15
	2 to 2	TW 36 D	TW 36 DN	25P	85.1	38	6	—	20
600V 20A 2mm ² (AWG14)	1 to 1 x 2	TTW 20 D	TTW 20 DN	20P	69.5	47	4.6	—	14
Type only for grounding 2mm ² (AWG14)	1 to 2	TW 25 DE	TW 25 DEN	10P	55	38.5	4.6	—	13
	1 to 2	TW 25 DEW	TW 25 DENW	10P	55	38.5	5.2	—	13
	2 to 2	TW 26 DE	TW 26 DEN	10P	66	38.5	4.6	—	15
Type with wire insertion indicator 600V 20A 2mm ² (AWG14)	1 to 2	TW 25 F	TW 25 FN	50P	72	38.5	4.6	—	11
End plate									
1 pair with one each at both sides	For TW15D	TWA 15D		5 pairs	49.3	32	Thickness 7 ^{Note}		5
	For TW16D	TWA 16D		5 pairs	58.8	32	Thickness 7 ^{Note}		6
	For TW25D and TW25DE (W)	TWA 25D		5 pairs	54.4	37.5	Thickness 4 ^{Note}		7
	For TW26D and TW26DE	TWA 26D		5 pairs	66	37.5	Thickness 4 ^{Note}		7.5
	For TW35D	TWA 35D		5 pairs	68.9	38	Thickness 6 ^{Note}		9
	For TW36D	TWA 36D		5 pairs	85.1	38	Thickness 6 ^{Note}		11
	For TTW20D	TTWA 20D		5 pairs	69.5	47	Thickness 6 ^{Note}		11
	For TW25F	TWA 25F		5 pairs	72	37.5	Thickness 4 ^{Note}		12

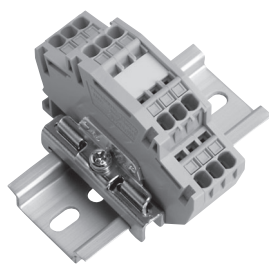
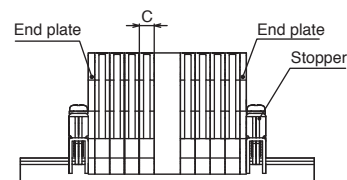
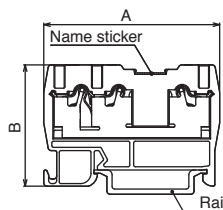
- Notes:
 1. The thickness of end plate indicates the total size of 2 plates at both sides (1 pair).
 2. End plate general mass is total of right and left 2 plates (1 pair).



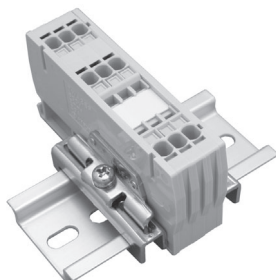
TW15D



TW26DE



TTW20D



TW25F

Line-up

Clutch Lock Terminal Blocks

PLC Interface Terminal Blocks

Rail Type Terminal Blocks

Assembly Terminal Blocks

Special Purpose Terminal Blocks

Terminal Block Accessories