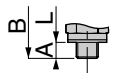
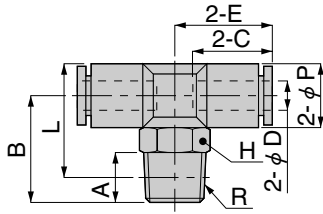


Tee

TT



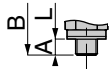
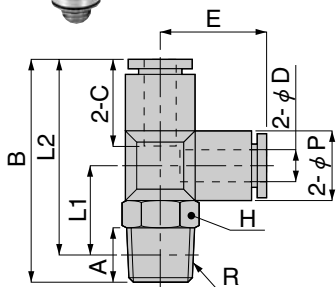
Metric thread type

Model	Tube outer diameter ϕD	R	A	B	L ^{Note}	ϕP	C	E	Width across flats H	Effective area (mm ²)	Mass (g) [oz.]
TT3-M3M	3	M3X0.5	2.5	12	12.5	6	9.3	10.8	5.5	0.7	1.9 [0.067]
TT3-M5M		M5X0.8	3	13.5	13.5				8	2	3.3 [0.116]
TT3-M6M		M6X1	3.9	14.5	13.6				1.9	3.6 [0.127]	
TT4-M3M	4	M3X0.5	2.5	15	16.5	8	11	12.5	8	1.4	3.9 [0.138]
TT4-M5M		M5X0.8	3	14.5	15.5				3.7	4.3 [0.152]	
TT4-M6M		M6X1	3.9	15.5	15.6				2.8	4.6 [0.162]	
TT4-01M		R1/8	8	17	17				10	4.6	7.2 [0.254]
TT6-M5M	6	M5X0.8	3	15.5	17.8	10.5	11.6	13.9	8	3.5	5.6 [0.198]
TT6-M6M		M6X1	3.9	16.5	17.9				3.6	5.9 [0.208]	
TT6-01M		R1/8	8	18	19.3				10	8.5	8.4 [0.296]

Note: The L dimensions for the tapered thread type are the reference dimensions after the fittings are assembled.

Branch tee

TB



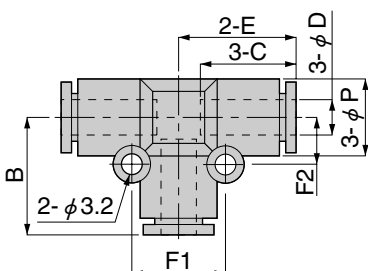
Metric thread type

Model	Tube outer diameter ϕD	R	A	B	L1 ^{Note}	L2 ^{Note}	ϕP	C	E	Width across flats H	Effective area (mm ²)	Mass (g) [oz.]
TB3-M3M	3	M3X0.5	2.5	22.8	9.5	20.3	6	9.3	10.8	5.5	0.7	1.9 [0.067]
TB3-M5M		M5X0.8	3	24.3	10.5	21.3				8	2.2	3.2 [0.113]
TB3-M6M		M6X1	3.9	25.3	10.6	21.4				2	3.6 [0.127]	
TB4-M3M	4	M3X0.5	2.5	28.1	12.5	25.6	8	11	13.1	8	0.9	4 [0.141]
TB4-M5M		M5X0.8	3	27.6	11.5	24.6				2.1	4.4 [0.155]	
TB4-M6M		M6X1	3.9	28.6	11.6	24.7				2.2	4.7 [0.166]	
TB4-01M		R1/8	8	30.1	13	26.1				10	4.6	7.3 [0.257]
TB6-M5M	6	M5X0.8	3	30.5	12.5	27.5	10.5	11.6	15	8	2.2	5.6 [0.198]
TB6-M6M		M6X1	3.9	31.5	12.6	27.6				3.3	5.9 [0.208]	
TB6-01M		R1/8	8	33	14	29				10	8.5	8.4 [0.296]

Note: The L1 and L2 dimensions for the tapered thread type are the reference dimensions after the fittings are assembled.

Union Tee

UT



Model	Tube outer diameter ϕD	B	ϕP	C	E	F1	F2	Effective area (mm ²)	Mass (g) [oz.]
UT3M	3	10.8	6	9.3	10.8	9	4.5	1.9	1.7 [0.060]
UT4M	4	13.1	8	11	13.1	11.2	5.6	4.6	3.3 [0.116]
UT6M	6	15	10.5	11.6	14.95	13.2	6.6	8.9	5.3 [0.187]