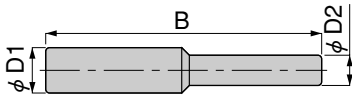


## Dimensions (mm)

### Different diameter socket nipple AND

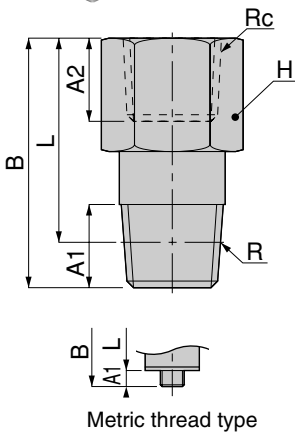


Model	$\phi D1$	$\phi D2$	B	Effective area (mm <sup>2</sup> )	Mass (g) [oz.]
AND6-4	6	4	36.7	4.2	0.5 [0.018]
AND8-6	8	6	40.5	11.2	0.9 [0.032]
AND10-8	10	8	44	19	1.3 [0.046]
AND12-10	12	10	49.6	39.7	2.2 [0.078]
AND16-12	16	12	54.4	47.5	4.2 [0.148]

### Extension bushing BB



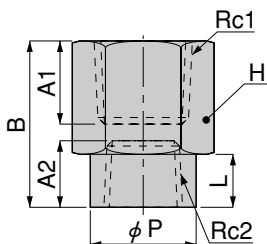
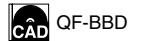
QUICK FITTINGS STANDARD TYPE



Model	R	Rc	A1	A2	B	L <sup>Note</sup>	Width across flats H	Effective area (mm <sup>2</sup> )	Mass (g) [oz.]
BBM5-M5	M5×0.8	M5×0.8	3	5	19.5	16.5	8	2.2	5.3 [0.187]
BBM5-M5L		Rc1/8		8	23	20		6.2 [0.219]	
BBM5-01		Rc1/8	8	14.5	11.5	14	2.4	11 [0.39]	
BB01-M5	R1/8	M5×0.8	8	6	12	8	10	12	5.7 [0.201]
BB01-01		Rc1/8		8	28.5	24.5	14	22	18 [0.63]
BB01-02		Rc1/4		11	21	17	17	24.1	19 [0.67]
BB01-03		Rc3/8		12	22	18	21	23.9	28 [0.99]
BB02-M5	R1/4	M5×0.8	11	6	16	10	14	11.9	16 [0.56]
BB02-01		Rc1/8		8	19	13		24.1	17 [0.60]
BB02-02		Rc1/4		11	33	27	17	44.7	32 [1.13]
BB02-03		Rc3/8		12	25	19	21	46.7	
BB02-04	Rc1/2	15	30	24	24	46.5	44 [1.55]		
BB03-01	R3/8	Rc1/8	12	8	17.5	11.2	17	25.3	25 [0.88]
BB03-02		Rc1/4		11	22.5	16.2		43	27 [0.95]
BB03-03		Rc3/8		12	37	30.7	21	68.1	53 [1.87]
BB03-04		Rc1/2		15	31	24.7	24	67.5	47 [1.66]
BB04-04	R1/2	Rc1/2	15	15	43	34.8	24	80.9	86 [3.03]

Note: The L dimensions for the tapered thread type are the reference dimensions after the fittings are assembled.

### Different diameter extension socket BBD



Model	Rc1	Rc2	A1	A2	B	L	$\phi P$	Width across flats H	Effective area (mm <sup>2</sup> )	Mass (g) [oz.]
BBD01-M5	Rc1/8	M5×0.8	8	5	17	7	8	14	5.3	12 [0.42]
BBD02-01	Rc1/4	Rc1/8	11	8	21	8	14	17	22.1	23 [0.81]
BBD03-01	Rc3/8	Rc1/8	12	8	22	8	14	21	28.8	32 [1.13]
BBD03-02		Rc1/4		11	25	11	17		37.7	36 [1.27]
BBD04-02	Rc1/2	Rc1/4	15	11	30	11	17	24	50.8	51 [1.80]
BBD04-03		Rc3/8		12	33	14	21		89.8	58 [2.05]