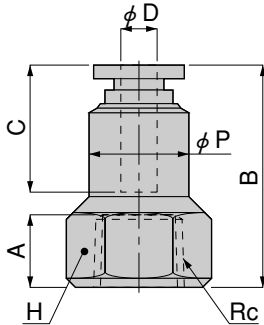
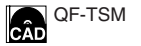


Dimensions (mm)

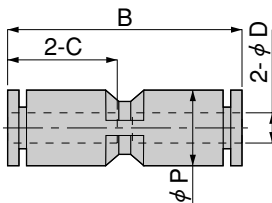
Female straight TSM



Model	Tube outer diameter ϕD	Rc	A	B	ϕP	C	Width across flats H	Effective area (mm ²)	Mass (g) [oz.]
TSM4-01	4	Rc1/8	8	24.4	11	14.9	14	5.3	16 [0.56]
TSM4-02		Rc1/4	11	27.4	12		17	6.1	24 [0.85]
TSM6-01	6	Rc1/8	8	26.5	13	17	14	12.5	18 [0.63]
TSM6-02		Rc1/4	11	29.5			17		25 [0.88]
TSM8-01	8	Rc1/8	8	28	14.5	18.2	14	26	20 [0.71]
TSM8-02		Rc1/4	11	31	15		17		27 [0.95]
TSM8-03		Rc3/8	12	32	15.5		21		37 [1.31]
TSM10-02	10	Rc1/4	11	33.7	17.5	20.7	17	43	33 [1.16]
TSM10-03		Rc3/8	12	34.7			21		42 [1.48]
TSM12-02	12	Rc1/4	11	35.8	20.8	23.3	21	40.7	57 [2.01]
TSM12-03		Rc3/8	12	36.8				71	51 [1.80]

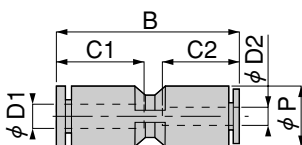
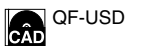
QUICK FITTINGS STANDARD TYPE

Union straight US



Model	Tube outer diameter ϕD	B	ϕP	C	Effective area (mm ²)	Mass (g) [oz.]
US4	4	30.8	10	14.9	5.3	4.7 [0.166]
US6	6	34.9	12.5	17	12.5	6.5 [0.229]
US8	8	37.8	14.5	18.4	20	9.4 [0.332]
US10	10	43.4	17.5	21.2	35	16 [0.56]
US12	12	47.8	21	23.4	59	22 [0.78]
US16	16	49.4	25	24.1	147.6	26 [0.92]

Different diameter union USD



Model	Tube outer diameter $\phi D1$	Tube outer diameter $\phi D2$	B	ϕP	C1	C2	Effective area (mm ²)	Mass (g) [oz.]
USD6-4	6	4	34.4	12.5	17	14.9	5.3	6.4 [0.226]
USD8-6	8	6	37.9	14.5	18.4	17	12.5	8.8 [0.310]
USD10-8	10	8	43.1	17.5	21.2	18.4	20	14 [0.49]
USD12-10	12	10	47.6	21	23.4	21.2	35	21 [0.74]
USD16-12	16	12	49.5	25	24.1	23.4	88.6	27 [0.95]