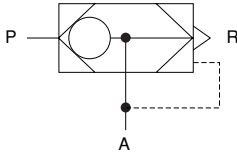


QUICK EXHAUST VALVES

SQE, SQE1, SQE2,
QE2, QE3, QE4, QE5

Symbol



Specifications

Item	Model	SQE	SQE1	SQE2	QE2	QE3	QE4	QE5
Port size	P, A	M5×0.8	Rc1/8	Rc1/4	Rc1/4	Rc3/8	Rc1/2	Rc3/4
	R	0.8	Rc1/4		Rc3/8		Rc3/4	
Effective area mm ²	P→A	2.5	21	30	50	60	120	140
	A→R	2.5	28	37	50	60	140	160
Flow coefficient Cv	P→A	0.12	0.91	1.32	2.5	2.8	5.8	6.8
	A→R	0.12	1.23	1.66	2.5	2.8	6.8	7.8
Media		Air						
Operating pressure range MPa (kgf/cm ²) [psi.]		0.03~0.9 (0.3~9.2) [4~131]	0.07~0.9 {0.7~9.2} [10~132]					
Proof pressure MPa (kgf/cm ²) [psi.]		1.35 {13.8} [196]						
Operating temperature range (atmosphere and media) °C [°F]		5~60 [41~140]						
Maximum operating frequency Hz		10						
Lubrication		Not required						
Mass g [oz.]		10 [0.35]	80 [2.82]	120 [4.23]	430 [15.17]			

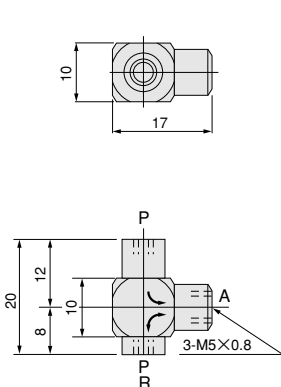
Order Codes

SQE Port size
Blank : M5×0.8
1 : Rc1/8
2 : Rc1/4

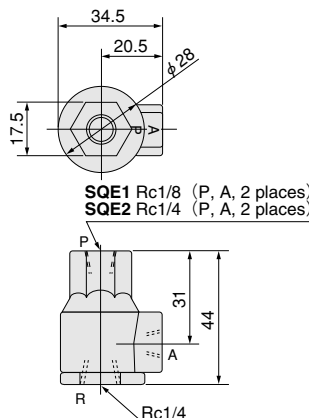
QE Port size
2 : Rc1/4
3 : Rc3/8
4 : Rc1/2
5 : Rc3/4

Dimensions (mm)

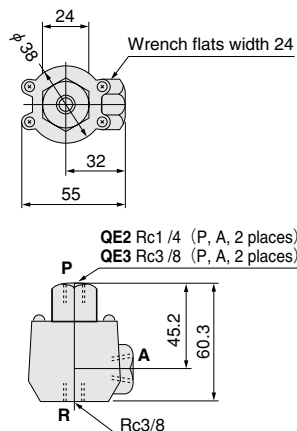
●SQE



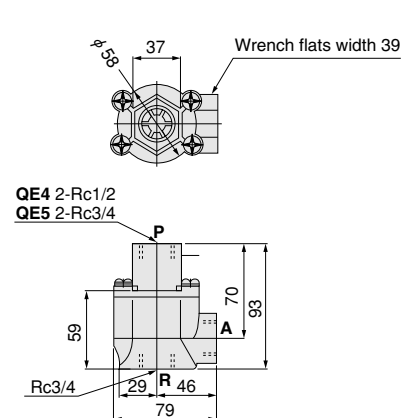
●SQE1 ●SQE2



●QE2 ●QE3



●QE4 ●QE5



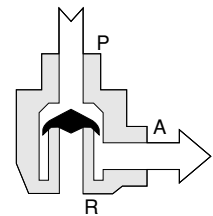
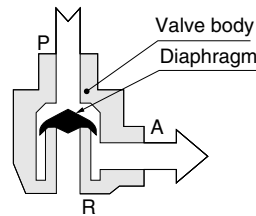
Operating Principles, Major Parts and Materials

When used as a quick exhaust valve

When used as a shuttle valve

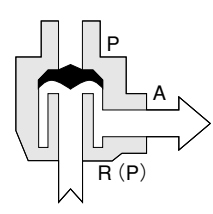
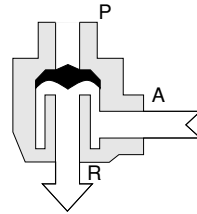
● Air supply condition

● Air supply condition (A)



● Exhaust condition

● Air supply condition (B)



Parts	Materials	
	SQE, SQE1, SQE2	QE2, QE3, QE4, QE5
Body	Zinc die-casting (SQE is brass)	Aluminum alloy
Diaphragm	Synthetic rubber	Urethane rubber
Port cover	—	Aluminum alloy
O-ring	—	Nitril rubber