



## Swing Clamp Pneumatic Type

### Features

1. 공압으로 작동되며 작은 고정력에 사용
2. 복동으로 공압에 의해 고정과 복귀된다.
3. 나사로 된 몸체를 이용한 손쉬운 설치
4. 내경범위 :  $\varnothing 15\sim 50$
5. 작동압력 :  $3\sim 9.9\text{kgf/cm}^2$
6. 사용온도 :  $0\sim 60^\circ\text{C}$
7. 레버 조립 시 고정 상태에서 볼트 체결
8. 레버는 옵션 사항임

1. Operated by pneumatic and used for low clamping force
2. Double-acting
3. Easy installation with threaded body
4. Piston Diameter :  $\varnothing 15\sim 50$
5. Operating Pressure :  $3\sim 9.9\text{kgf/cm}^2$
6. Operating Temperature :  $0\sim 60^\circ\text{C}$
7. When assembling the lever, the bolts should be fastened in a fixed state.
8. Lever is option item

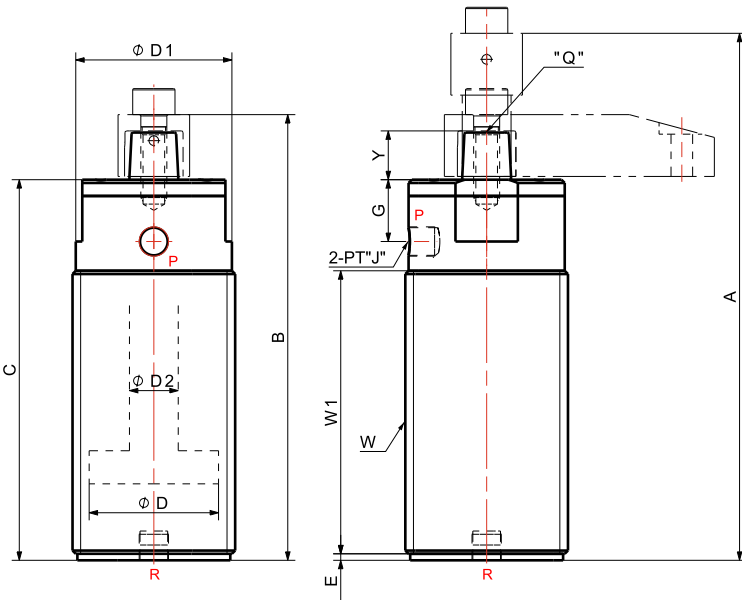
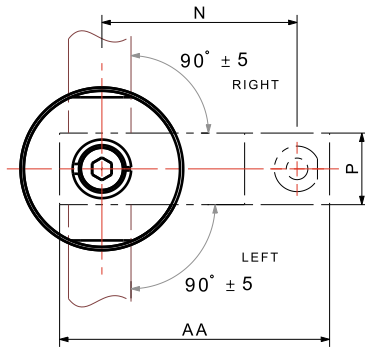
Mounting Accessory(Page 100) :

MBS	MBR
MBS2012	MBR2010
MBS2512	MBR2510
MBS3212	MBR3210
MBS4012	MBR4010
MBS5012	MBR5011
MBS6015	MBR6011

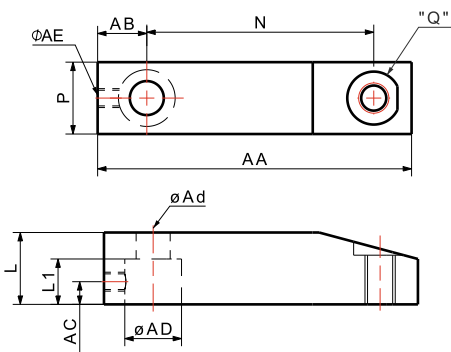
### > SDR - 15 14 A

① ② ③ ④

- ① R=Right, L=Left ② Piston Diameter (mm) ③ Total Stroke(mm)  
④ Pneumatic Type



### LEVER (OPTION)



### Dimensions

MODEL NO.	SDR/L-1514A	SDR/L-2018A	SDR/L-2518A	SDR/L-3025A	SDR/L-4032A	SDR/L-5032A
A	97	114	120	150	169	173
B	83	96	102	125	137	141
C	70	79	85	105	117	120
$\varnothing D$	15	20	25	30	40	50
$\varnothing D1$	18.5	23	30	38	48	58
$\varnothing D2$	8	10	10	12	15	18
E	4	3	3	2	2	4
G	11	11	12.5	12	19	17
J	M5	M5	M5	PT 1/8	PT 1/8	PT 1/8
L	12	16	16	19	19	19
L1	8.5	12.5	12.5	12.5	14	14
N	25	30	35	35	60	70
P	14	16	16	19	22	25
Q	M4	M5	M6	M6	M8	M8
W	M20 x 1.0P	M25 x 1.5P	M32 x 1.5P	M40 x 1.5P	M50 x 1.5P	M60 x 1.5P
W1	50.5	59	65	83	87	90
Y	9.5	13.5	13.5	13.5	15	16
AA	38.5	45	55	55	83	95
AB	8.5	10	12	13	13	15
AC	7	10	10	10	11	6
$\varnothing Ad$	4.5	5.5	6	7	9	9
$\varnothing AD$	11	13	13	15	18	21
$\varnothing AE$	2	3	3	3	3	3