

## Hinge Clamp Pneumatic Type



### Features

- |                                    |  |
|------------------------------------|--|
| 1. 공압으로 작동                         | 1. Operating by pneumatic pressure               |
| 2. 편리한 배관                          | 2. Easy piping                                   |
| 3. 빠른 제품 장탈착                       | 3. Rapid loading and removal of workpiece        |
| 4. 내경범위 : 15~63mm                  | 4. Piston Diameter : $\phi 15\sim 63$            |
| 5. 작동압력 : 3~9.9kgf/cm <sup>2</sup> | 5. Operating Pressure : 3~9.9kgf/cm <sup>2</sup> |
| 6. 사용온도 : 0~60°C                   | 6. Operating Temperature : 0~60°C                |
| 7. 피스톤 속도 : 8~100mm/s              | 7. Piston Speed : 8~100mm/s                      |
| 8. 레버는 옵션                          | 8. Lever is option item                          |

### > HGC - 15 19 A

① ② ③

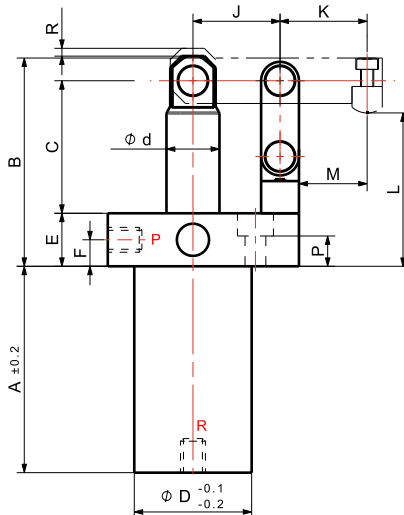
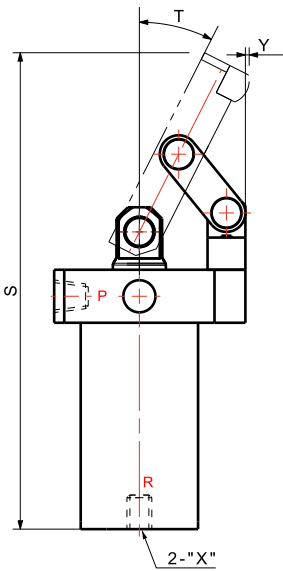
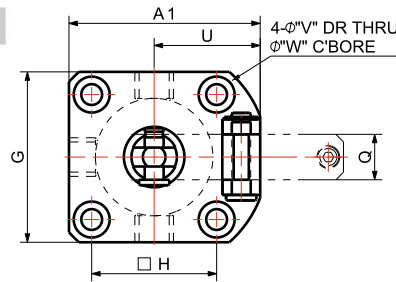
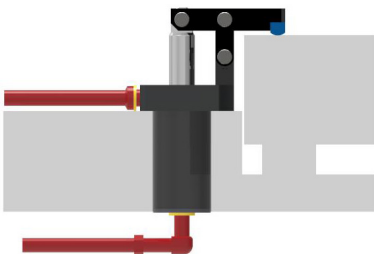
① Piston Diameter(mm) ② Total stroke(mm) ③ Pneumatic Type

### Dimensions

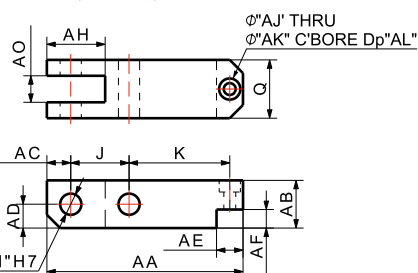
MODEL NO.	HGC-1519A	HGC-2024A	HGC-2527A	HGC-3035A	HGC-4040A	HGC-5051A	HGC-6353A
A	45	50	54.5	76.5	81.5	101.5	105
A1	37	45	50.5	64	74	91.5	105
B	43.5	49.5	55	78.5	83.5	96.5	100
C	30.5	31	35	50.5	55.5	67.5	69
$\phi D$	20	25	31	37	47	58	72
$\phi d$	8	12	14	18	20	22.4	28
E	13	14	14	18	18	20	20
F	5	5.5	7	9	9	10	10
G	32	40	45	52	62	77	88
H	22	28	33	37	47	57	67
J	16	20	23	30	35	45	50
K	16	20	23	30	35	45	50
L	31.5	37.5	40.5	57.5	62.5	75.5	75
M	11	15	18	22	27	37	39
P	8.5	8	8	11	10	11	11
Q	9	9	12	19	19	22	25
R	2	2	2	3	3	3	3
S	101.4	114.8	125.8	175.7	188.7	228.1	238.9
T	25.8°	25.1	26.8	26.3	28.5	29.5	33
U	21	25	28	38	43	53	61
V	4.5	5.5	5.5	7	7	9	9
W	8	9.5	9.5	11	11	14	14
X	M5	M5	PT 1/8	PT 1/8	PT 1/8	PT 1/8	PT 1/8
Y	0.3	0.7	1	0.6	1.3	3.3	6.9
AA	40.5	49	56	74	84	104	117
AB	9	9	12	19	19	18	22
AC	4.5	5	6	9	9	9	11
AD	4.5	4.5	6	9	9	9	11
Ad	5	5	5	8	8	8	10
AE	8	8	8	10	10	10	12
AF	4	4	4.5	8	8	7	9
AH	12	13.5	14.5	23	23	22	26
AJ	3.5	3.5	3.5	4.5	4.5	4.5	6
AK	6	6	6	8	8	8	9.5
AL	3	3	3	4	4	4	6
AO	4	4	5	9	9	10	12
CA	8	8	8	14	14	14	16
CB	8	8	8	10	10	10	12
CC	7	7	7	10	10	10	12
CD	6	6	6	10	10	10	10
CE	M3	M3	M3	M4	M4	M4	M5
CF	4.5	4.5	4.5	6	6	6	6

DIMENSIONS (mm)

### Piping Method



### LEVER (OPTION)



### PAD (OPTION)

