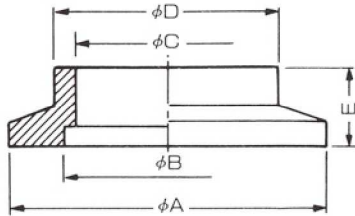


Weld stub flanges (materials:SUS)

(a)

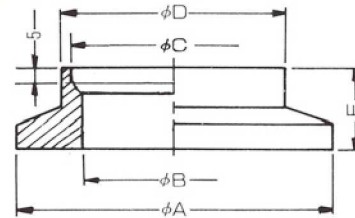


(注) 一部 $\phi B < \phi C$ の形状となる事があります。
 (Note) Partially, dia. B may be smaller than dia. C.

(a)

Model No.	Size	ϕA	ϕB	ϕC	ϕD	E
VP3010	NW 10	30	12.2	10.0	13.8	10
VP3010-50						50
VP3016	NW 16	30	17.2	16.0	20.0	10
VP3016-50						50
VP3025	NW 25	40	26.2	24.0	27.2	20
VP3025-50						50
VP3040	NW 40	55	41.2	39.0	42.7	20
VP3040-50						50
VP3050	NW 50	75	52.2	55.0	60.5	20
VP3050-50						50
VP3063	NW 63	87	70.2	70.2	76.3	20
VP3063-50						50

(b)



(b)

Model No.	Size	ϕA	ϕB	ϕC	ϕD	E
VP3080	NW 80	114	83.2	89.3	98.0	25
VP3100	NW 100	134	102.2	114.5	118.0	25
VP3125	NW 125	161	127.6	140.2	144.0	20
VP3160	NW 160	190	153.6	165.7	168.0	20

※標準材質はSUS304ですが、SUS316Lをご希望の場合は、末尾に“L”を付けてください。

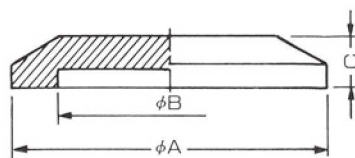
例:VP3025L、VP3025L-50

※Please put up "L" to the end when you want SUS316L though a standard material is SUS304.

Example:VP3025L、VP3025L-50

Block flanges (materials:SUS)

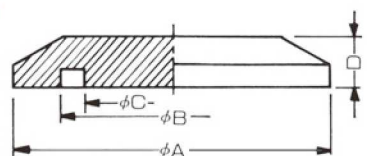
(a)



(a)

Model No.	Size	ϕA	ϕB	C
VP4010	NW 10	30	12.2	6
VP4016	NW 16	30	17.2	6
VP4025	NW 25	40	26.2	6
VP4040	NW 40	55	41.2	6
VP4050	NW 50	75	52.2	6
VP4063	NW 63	87	70.2	6

(b)



(b)

Model No.	Size	ϕA	ϕB	ϕC	D
VP4080	NW 80	114	83.2	73	11
VP4100	NW 100	134	102.2	92	11
VP4125	NW 125	161	127.6	119.6	11
VP4160	NW 160	190	153.6	145.6	11