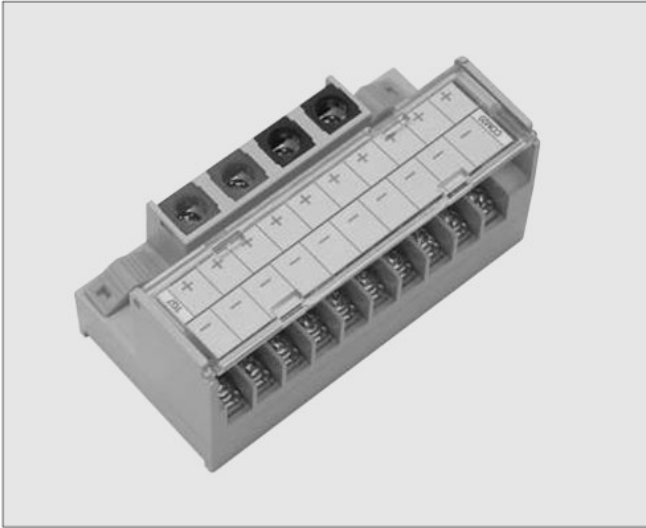


TG7-COM20P Series

Separate input power terminal, 7.0mm pitch common terminal block



■ Feature

- **Separate input power terminal**
 - Since input and output can be checked at a time by separating the input power terminal, it is convenient for maintenance and repair, and is stable by reinforcing the power circuit than existing products
 - Electrically safe structure by separating input power that can use O-type terminals
- **Realization of ultra-compact size**
Ultra-compact size 80.0(W)*40.0(D)mm applicable to narrow space
- **Easy for working and maintenance**
Convenience of workability, maintenance and repair by using a hinge-typed transparent T/B cover
- **Structure with excellent environmental resistance and safety**
As this is an integration type in which PCB is not exposed to the outside, it has an electrically safe structure such as dust, moisture, etc. and flame retardant material is used for external case

■ Model configuration



- 1 Common dedicated 7.0mm pitch input power terminal separate common terminal block
- 2 Number of terminal poles
- 3 Common terminal configuration

■ Model selection

Model	Pole	Common terminal configuration	Dimension (W * D mm)	Mounting method
TG7-COM20P	Input : 4	I: 2P⊕, 2P⊖ / O: Top row 10P⊕, bottom row 10P⊖	80.0 * 40.0	Screw fastening/ DIN Rail (Channel)
TG7-COM20PB	Output : 20	I: 2P⊕, 2P⊖ / O: Left upper and lower 10P⊕, right upper and lower 10P⊖		

※ "Y", "O" terminal combined product

■ General specifications

Rated voltage	125V Max.
Rated current	10A
Insulation resistance	100MΩ or more (DC 500V)
Withstand voltage	AC500V 1min
Suitable wire	AWG22~16 (1.5mm/MAX)
Terminal screw	Input side M3.5 × 10L (4Pole)
	Output side M3 × 6L(20Pole)
Screw torque	7~8Kgf·cm (0.68~0.78N·m)
Ambient temperature	-10°C ~ +50°C (No condensation)

■ Material

Terminal block, cover	Modified PPO
Protection cover	Polycarbonate
Board	Epoxy 1.6t

■ Applicable crimp terminal specifications

