

TGF Series (Terminal block detachable type, interface terminal block with LED for operation check)

32P separate I/O terminal block for easy remote I/O operation check



■ Features

- **First terminal block detachable interface terminal in Korea**
When replacing the product, it is easy to maintain and repair as it can be replaced by removing only the terminal part without disassembling the wiring
- **Interface terminal block for input and output with operation display LED**
If the distance between the controller and the I/O is far and it is not easy to check the transmission and reception of signals, it is possible to check the I/O with the LED blinking easily
- **Structure with excellent environmental resistance and safety**
As this is an integration type in which PCB is not exposed to the outside, it has an electrically safe structure such as dust, moisture, etc. and flame retardant material is used for external case
- **Usage**
Ideal for systems and remote I/Os that require frequent I/O checks

■ Model configuration



- ① TGF series terminal block detachable type
- ② Applicable connector specifications and number of terminal poles
- ③ IO indication LED mounting type
- ④ Input side common polarity

■ Model selection

Model	IO points	Common polarity	Mounting connector model	Cable side connector model	Dimension (W * D mm)	Mounting method
TGF-1H40L-N	32Point	NPN ⊕COM	HIF3BA-40PA-2.54DSA	HIF3BA-40D-2.54R	163 * 49.5	Screw fastening / DIN Rail (Channel)
			XG4A-4031	XG4M-4030		
TGF-1H40L-P		PNP ⊖COM	HIF3BA-40PA-2.54DSA	HIF3BA-40D-2.54R		
			XG4A-4031	XG4M-4030		

※ Mounting connectors are compatible products and are subject to change without notice.

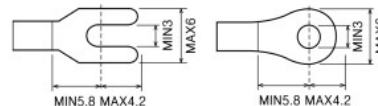
■ General specifications

Rated voltage	12~24V DC
Rated current	1A
Operation display	IO : LED (Red) / Power : LED (Green)
LED rating	24V DC : 100mA max. / Point
Insulation resistance	100MΩ or more (DC 500V)
Withstand voltage	AC500V 1min
Suitable wire	AWG22~16 (1.5mm/MAX)
Terminal screw	M3 × 6L
Screw torque	7~8Kgf·cm (0.68~0.78N·m)
Ambient temperature	-10°C ~ +50°C (No condensation)

■ Material

Terminal block, cover	Modified PPO
Protection cover	Polycarbonate
Board	Epoxy 1.6t

■ Applicable crimp terminal specifications

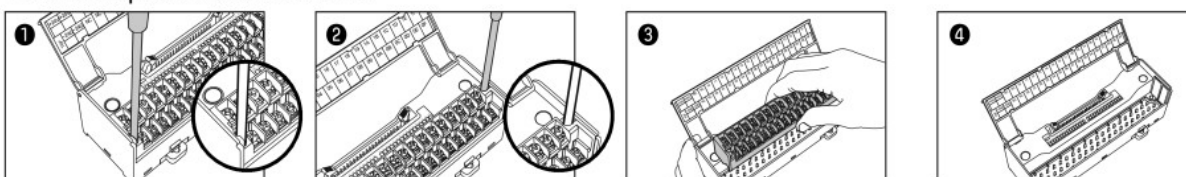


■ Applicable cable specifications

When ordering, please indicate the connection cable between various PLCs and our I/O LINK terminal block for TGF-1H40L-□.

※ Note) It is the same cable as TG7-1H40L-□.

■ How to replace the terminal block



Separation method: After loosening the left and right bolts with a screwdriver in the left direction, hold the terminal block and pull it out to separate.

Installation method: In the reverse order of removal, with the terminal block in the pocket, tighten the left and right bolts in the right direction with a screwdriver to complete.

※ Caution) If the bolts are not fully tightened during installation, poor contact may occur.

(A)

IOLINK

Interface Terminal Block

Power Distribution Block
BPS / BPD Series
SPS / SPD Series
XK2 / XK2S Series

Panasonic PA-N
Takamisawa NYP
Relay Terminal

Panasonic PQ
Omron G6DN
G6D
G6B
Relay Terminal

Samwon Act SHN
Omron G2R
Relay Terminal

Panasonic PhotoMOS SSR
Relay Terminal

Panasonic Safety Relay

General Purpose Relay
MY-type Relay
LY-type Relay
SHN Relay

I/O cable selection list