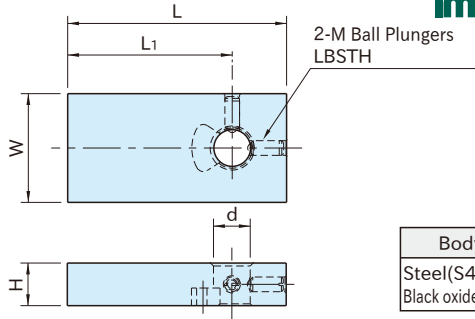


# QLSW-SH

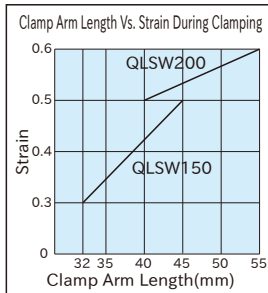
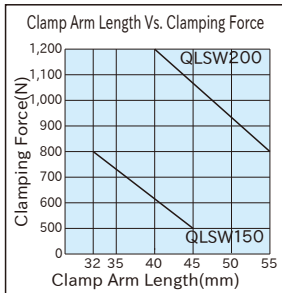
## MACHINABLE CLAMP ARMS FOR STANDARD SWING CLAMPS



Body
Steel(S45C)
Black oxide finish

Part Number	L	W	H	d (F8)	L1	M	Allowable Weight of Clamping Tip *(g)	Swing Clamps	Weight (g)
QLSW150-SH	60	30	12	10	45	M4	100	QLSW150Series	150
QLSW200-SH	75	40	16	16	55	M5		QLSW200Series	330

\*)A clamping tip to mount on the end of the clamp arm must not weigh over 100g.



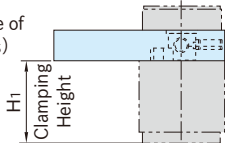
Notes:

- Clamp arm length denotes L1 dimensions below.
- Clamping force and strain during clamping denote values gained when the max. allowable load is applied to the handle.

### How To Use

- Use for **QLSW** clamp arm customization
- Machine to your clamping requirements

(Clamping Height in Use of Machinable Clamp Arms)



Part Number	H1
QLSW150-SH	34 **)
QLSW200-SH	47 ***)

\*\*) Actual clamping height:33.4 to 34.6 (clamping range:1.2)

\*\*) Actual clamping height:46.1 to 47.9 (clamping range:1.8)