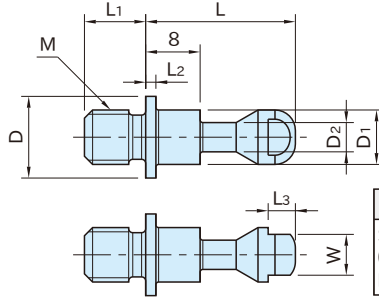


QLPD-M

CLAMPING SCREWS(Standard)



Body
Steel(SCM435)
Quenched and tempered
Black oxide finish

Part Number	D ₁	M	L ₁	L	D	L ₂	D ₂	W	L ₃	Pull Clamps	Weight (g)
QLPD150-M 5	5	M 5×0.8	6	17	8	1.2	3	4	2.5	QLPD150	3
QLPD150-M 6		M 6×1	7								4
QLPD200-M 8	8	M 8×1.25	9	22	12	1.5	4.3	6	4	QLPD200	10
QLPD200-M10		M10×1.5	11								13

Notes

Custom Clamping Screws (different screw thread sizes) are available on request.

How To Use

Recommended Spacing Tolerance in Use of Clamping Screws

