

QCTH-N, QCTH-B CAM RECEPTACLES

HS Electroless Nickel Plated

IMAO



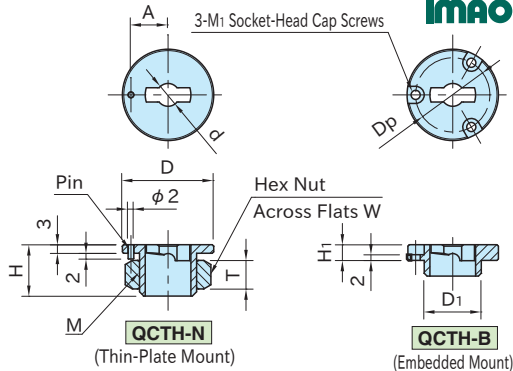
QCTH-N

(Thin-Plate Mount)



QCTH-B

(Embedded Mount)



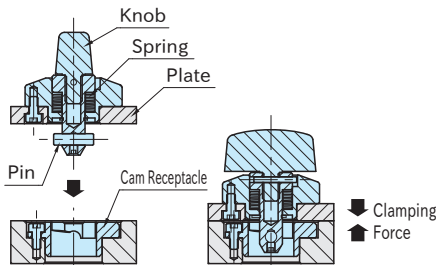
Type	Body	Nut
QCTH-N	SCM440 steel	Stainless steel
QCTH-B	Electroless nickel plated	-

Part Number	Proper Plate Thickness	D	H	d (+0.08 +0.04)	A (±0.1)	M	T	W	D ₁ (-0.04 -0.08)	H ₁	M ₁	D _p	Weight (g)	Proper Quarter-Turn Clamps		
														QCTH	QCTH-S	
QCTH0525-N	Thin-Plate Mount	6~10	25	-0.04	16	5	10.5	M14X1.5(fine thread)	8	22	-	-	-	40	QCTH	0525-10
QCTH0834-N	Thin-Plate Mount	6~12	32	-0.08	18	8	13	M20X1.5(fine thread)	10	30	-	-	-	55	QCTH-S	0834-14
QCTH0525-B	Embedded Mount	Over 10	25	-	9	5	-	-	14	4.5	M2	21	20	QCTH-S	0525-10	
QCTH0834-B		Over 12	32	-	11	8	-	-	20	5.5	M3	26	35	QCTH-S	0834-14	
																0834-20

Furnished with

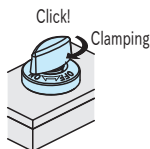
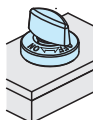
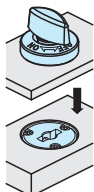
- **QCTH0525-B** : 3 of socket-head cap screws, M2x0.4-5L
- **QCTH0834-B** : 3 of socket-head cap screws, M3x0.5-6L

Feature



When the pin contacts the cam in the Cam Receptacle, the spring gets compressed to press down the plate.

How To Use



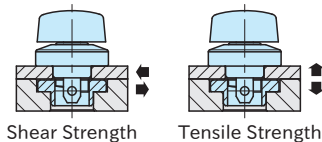
1. Ensure that the knob is positioned at the "OFF" mark.

2. Insert the Quarter-Turn Clamp.

3. Turn the knob to the "ON" mark for clamping. The knob clicks when it is clamped/unclamped. Note: For unclamping, follow back these steps.

Continuing on Next Page

Technical information



Part Number		Heatresistant Temperature (°C)	Shear Strength (kN)	Tensile Strength (kN)
QCTH	0525-10	130	1.8	1.2
	0834-14		3.2	2.6
	0834-20		3.2	2.6
QCTH-S	0525-10	200	1.8	1.2
	0834-14		3.2	2.6
	0834-20		3.2	2.6